

# **SETA HEAD START CLASSROOM BUILDING AND SITE IMPROVEMENTS**

## **ADDENDUM #2**

Date: May 11, 2018

Owner: SETA Head Start  
925 Del Paso Blvd, Suite 100  
Sacramento, CA 95815

Architect: Williams + Paddon Architects  
2237 Douglas Blvd., Suite 160  
Roseville, CA 95661

---

**Greg M. Tonello – C18650, Exp. 02/28/19**

This Addendum has been prepared to clarify, modify, delete, or add to the drawings and/or specifications for the above referenced project, and revisions to items listed here shall supersede description thereof prior to the above stated date. All conditions not specifically referenced here shall remain the same. It is the obligation of the Prime Contractor to make subcontractors aware of any items herein that may affect submitted bids.

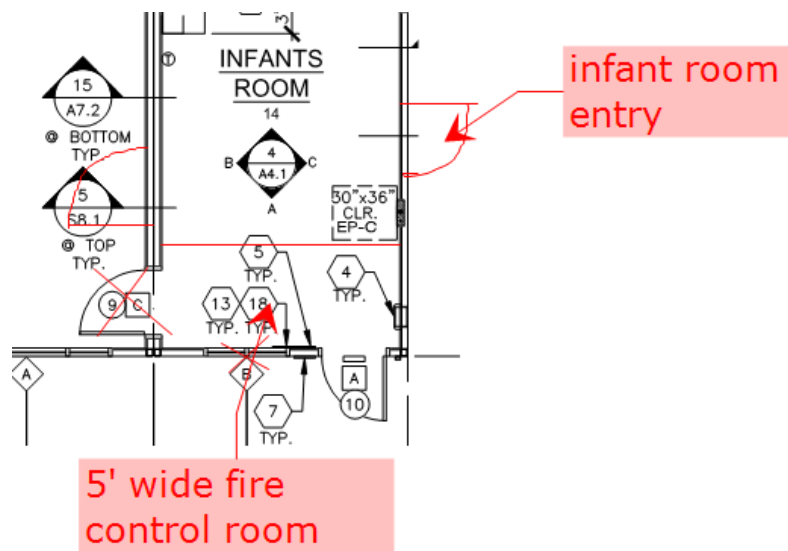
In case of conflict between the bid documents and this Addendum, this Addendum shall govern. This Addendum shall be considered part of the Plans, Specifications, and Contract Documents. All addenda items refer to the plans and project manual(s) unless specifically noted otherwise.

Acknowledge receipt of this addendum by inserting its number and date on the BID FORM at time of bid. Failure to do so may subject bidder to disqualification.

TOTAL PAGES IN THIS ADDENDUM (excluding attachments): 2

**I. GENERAL ITEMS:**

- A. The signage specification was missing in Addendum 01, see attached.
- B. City of Sacramento Fire Department requires this building to be sprinklered because it is over 3,599 SF (an amendment to the 2016 CFC/CBC). This scope shall be added to the site contractor's scope as a deferred submittal. A fire riser will be placed inside a 5' clear width fire control room in the below location with a door accessible from the exterior. Attached are the requirements of a fire control room per the Sacramento Metropolitan Fire District.



- C. See revised page 2 of 'attachment D – bidders information form' with an allowance for fire sprinklers and necessary underground of \$40,000.

**II. CHANGES TO DRAWINGS:**

**A. DRAWING SHEET(S):**

**1. SHEET AND TITLE: C3.0 GRADING AND UTILITY PLAN**

- a. City of Sacramento is requiring a small detention basin for water quality before entering the storm drain system, see attached sketch C3.0a. Install sod and irrigation in basin for a full working system with the rest of campus.

**END OF ADDENDUM**

**SIGNAGE**  
**10 14 00**

SETA Head Start Classroom Building and Site Improvements  
175000.00

**PART 1 - GENERAL**

**1.01 PRINCIPAL WORK IN THIS SECTION**

- A. The requirements of the Owner's General Conditions, Supplementary Conditions and Division 1 - General requirements apply to the work of this Section.
- B. Coordinate the work of this Section with related trades.
- C. Verify applicable dimensions at the jobsite.
- D. Furnish materials and perform labor required to execute this work as indicated on the drawings, as specified and as necessary to complete the work required by project conditions, including, but not limited to:
  1. Signage:
    - a. Exterior and Interior Signage
  2. Code and ADA compliance:
    - a. All identifying devices shall meet with standards and codes as herein listed, whether listed or not, and comply with the most restrictive requirements. Including the required Braille symbols.
  3. Accessories:
    - a. Adhesives and accessories, as required, specified or not.
    - b. Fasteners

**1.02 REFERENCE STANDARDS**

- A. 2016 California Code of Regulations (CCR), Title 24, California Building Standards Commission (CBSC) [www.bsc.ca.gov](http://www.bsc.ca.gov) current edition at time of permit issuance.
- B. (CCR) Title 24, (CBSC) Chapter 11 – California Green Building Standards Code
  1. Non-residential new construction
    - a. All occupancy types
- C. ATBCB ADAAG - Americans with Disabilities Act Accessibility Guidelines, current version.
- D. International Code Council (ICC), [www.iccsafe.org](http://www.iccsafe.org)
- E. Refer to standards herein listed with specific products/materials.

**1.03 PERFORMANCE, TESTING AND INSPECTION**

- A. **General:**
  1. Comply with manufacturer's standards.
  2. Comply with Building Code.
  3. Refer to Division 1 for additional requirements for DSA projects
  4. Comply with Building Code and CBC Title 24 most restrictive and in accordance with DSA interpretations.
  5. Comply with ADA and CBC Title 24 most restrictive and in accordance with DSA interpretations
- B. **Sustainability:**
  1. Refer to Division 1 sustainability requirements.
    - a. Refer to product criteria identified herein.
- C. Standards:

Item	Name of Test	Performance	Testing Standard
Signage and Identification	General	Comply	California Building Code including, but not limited to CBC 11-B Division 7, and CBC Chapter 10 & ATBCB ADAAG.
Raised Characters	Depth	Comply	CBC 11B-703.2.1
	Case	Comply	CBC 11B-703.2.2
	Style	Comply	CBC 11B-703.2.3
	Proportions	Comply	CBC 11B-703.2.4
	Character height	Comply	CBC 11B-703.2.5
	Stroke thickness	Comply	CBC 11B-703.2.6
	Character spacing	Comply	CBC 11B-703.2.7

**SIGNAGE**  
**10 14 00**

SETA Head Start Classroom Building and Site Improvements  
175000.00

Braille	Line spacing	Comply	CBC 11B-703.2.8
	Format	Comply	CBC 11B-703.2.9
	Type	Comply	CBC 11B-703.3
	Dimensions & capitalization	Comply	CBC 11B-703.3.1 Table 11B-703.3.1
	Position	Comply	CBC 11B-703.3.2
Installation height and placement	Tactile signs (except for tactile characters at elevator car controls)	Comply	CBC 11B-703.4.1
	Location	Comply	CBC 11B-703.4.2
Visual Characters (non-Tactile signs)	Finish and Contrast	Comply	CBC 11B-703.5.1
	Case	Comply	CBC 11B-703.5.2
	Style	Comply	CBC 11B-703.5.3
	Character Proportions	Comply	CBC 11B-703.5.4
	Character Height	Comply	CBC 11B-703.5.5
	Height from finish floor or ground	Comply	CBC 11B-703.5.6
	Stroke thickness	Comply	CBC 11B-703.5.7
	Character spacing	Comply	CBC 11B-703.5.8
	Line spacing	Comply	CBC 11B-703.5.9
Pictograms	Pictogram field	Comply	CBC 11B-703.6.1
	Finish and contrast	Comply	CBC 11B-703.6.2
	Text descriptors	Comply	CBC 11B-703.6.3
Symbols of Accessibility	Finish and Contrast	Comply	CBC 11B-703.7.1
	Symbols	International Symbol of Accessibility	CBC 11B-703.7.2.1
		International Symbol of TTY	CBC 11B-703.7.2.2
		Volume Control Telephones	CBC 11B-703.7.2.3
		Assistive Listening Systems	CBC 11B-703.7.2.4
		Cleaner Air Symbol	CBC 11B-703.7.2.5
		Toilet & Bathing Facility geometric symbols	CBC 11B-703.7.2.6
Sign Body	Thickness	1/4", u.n.o.	
Refer to drawings and as herein specified			

**1.04 SUBMITTALS**

- A. Refer to Division 1 for substitution, deviation and/or submittal procedures.
- B. Submit O&M (Operation and Maintenance) manuals in accordance with Division 1 requirements and as herein specified.
- C. Refer to Division 1 for sustainability requirements
- D. Submit Manufacturer's data and shop drawings.
  1. Provide shop drawing of all signs including, but not limited to;
    - a. Signs – Building (Interior and Exterior)
      1. Schedule with sign designation
      2. Sizes
      3. Colors
      4. Text types
      5. Mounting / Details
      6. Text schedule
      7. Braille
  2. Submit samples:
    - a. A representative sign with text and Braille
    - b. Color and material options

**SIGNAGE**  
**10 14 00**

SETA Head Start Classroom Building and Site Improvements  
175000.00

**1.05 QUALITY ASSURANCE**

- A. Refer to Division 1 for quality control requirements.
- B. Contractor / Installer / Fabricator shall have been in business for **five (5)** years providing/installing/finishing projects of similar size and complexity.
- C. Manufacturer shall have been in business for **five (5)** years providing/installing/finishing projects of similar size and complexity.
- D. Catalog Standards:
  - 1. Manufacturer's catalog numbers constitutes specific requirements for items specified and does not preclude use of equal products and procedures.

**1.06 PRODUCT DELIVERY, STORAGE AND HANDLING**

- A. Refer to Division 1 for product delivery, storage and handling requirements.
- B. Deliver and store products suitable wrapped or packaged to protect against damage. Do not remove protective coverings until time of installation.
  - 1. Protect finish and edges in accordance with panel manufacturer's recommendations.
  - 2. Store material in accordance with panel manufacturer's recommendations.

**1.07 JOB CONDITIONS**

- A. Field-verify that all components, backing, etc. by others are installed correctly to proceed with installation of products as herein specified.

**1.08 PROTECTION**

- A. Protect finish surfaces at all times from surfaces and material adjacent to them.
- B. Finish work defaced with other materials on surface shall be replaced.
- C. Protect work under this section from damage by other trades.

**1.09 GUARANTEE / WARRANTY**

- A. Refer to Division 1 for closeout submittal procedures.
- B. Furnish initial **one (1)** year written warranty signed by manufacturer and installer agreeing to repair and/or replace work which has failed as a result of defects in materials or workmanship.
  - 1. Upon notification of **Owner** within the warranty period, such defects shall be repaired and replaced at no cost to the **Owner**.
- C. Furnish manufacturer's additional **Lifetime** warranty agreeing to repair and/or replace work which has failed as a result of defects in materials or workmanship.
  - 1. Upon notification of **Owner** within the warranty period, such defects shall be repaired and replaced at no cost to the **Owner**.

**1.10 RELATED WORK/SECTIONS**

- A. Related work includes, but is not limited to the following:
  - 1. Building Construction
- B. Related Sections include, but are not limited to the following:
  - 1. Division 1

**1.11 OPERATION AND MAINTENANCE DATA**

- A. Submit as part of project closeout:
  - 1. Complete instructions regarding maintenance of the materials, finishes, etc.
  - 2. Refer to Division 1 for closeout submittal procedures.

**1.12 SEQUENCING AND SCHEDULING**

- A. Schedule work and sequence with **General Contractor**.
- B. Schedule required testing, prior to the installation of materials, components, etc.

**1.13 GENERAL SYSTEM DESCRIPTION**

- A. Fabrication, furnishing and installation of signage, posts, footings and accessories necessary to fully install all required signage.
- B. Furnishing all fasteners.

**SIGNAGE**  
**10 14 00**

SETA Head Start Classroom Building and Site Improvements  
175000.00

- C. Furnishing all signs.

**PART 2 – PRODUCTS**

**2.01 ACCEPTABLE MANUFACTURERS**

- A. Single source responsibility, specified items shall be from one manufacturer for each product type.
- B. Acceptable manufacturers shall be one of the following and as herein listed and in Drawings:
  - 1. Signage Manufacturer:
    - a. Advance Corporation, Braille-Tac™ Division, [www.advancecorp.com](http://www.advancecorp.com) (800) 328-9451, (916) 971-0819
    - b. Apco [www.apcosigns.com](http://www.apcosigns.com)
    - c. Gemini Incorporated, [www.signletters.com](http://www.signletters.com)
    - d. In-Pro Signscape, [www.inprocorp.com](http://www.inprocorp.com) (800) 222-5556
    - e. Interface Architectural Signage, Inc., [www.interfacedesign.com](http://www.interfacedesign.com) (415) 254-3401, (800) 445-4796, (775) 337-0920
    - f. Mohawk Sign Systems, [www.mohawksign.com](http://www.mohawksign.com) (800) 223-7705
    - g. ProAd Signs, [www.proadsigns.com](http://www.proadsigns.com), 800.928-8202
    - h. Takeform Architectural Graphics, [www.takeform.net](http://www.takeform.net), (530) 308-1810
  - 2. Fire Extinguisher Signage:
    - a. Seton, 800.243-6624, [www.seton.com](http://www.seton.com)
  - 3. Plastic Material:
    - a. Rowmark, [www.rowmark.com](http://www.rowmark.com)
  - 4. Reviewed Equivalent by **Architect**.
    - a. Substitutions and deviations shall require **Architect's** approval and shall be given in letterform.
    - b. Refer to Division 1 for substitution, deviation and/or submittal procedures.
    - c. Proposed alternate products must be equal in terms of chemical composition, color, finish, configuration, performance standards, etc.
- C. All products and materials indicated shall be installed according to current listed specification requirements and manufacturers specifications/recommendations.
- D. Refer to drawings, details, and other related specification section whether listed or not.
- E. Details shall set basic requirements for size and configuration of systems.





**2.02 MATERIAL – BUILDING EXTERIOR**


- A. General
  - 1. Refer to documents for additional information and design criteria
  - 2. Refer to details for additional information, design criteria, posts and footing requirements.
  - 3. Signage Type:
    - a. Partial Inlay, uno.
- B. Material
  - 1. Typical
    - a. Acrylic
    - b. San parrel rigid vinyl
- C. Characters
  - 1. Partial inlay
  - 2. Raised 1/32"
  - 3. Beveled edges
- D. Braille
  - 1. Partial inlay
  - 2. Raised
- E. Configuration
  - 1. Size: Refer to details and as herein indicated
  - 2. Sign Edges: Beveled
- F. Mounting:
  - 1. Typical, U.N.O.: Install with vandal resistant fasteners one at each corner

**SIGNAGE**  
**10 14 00**

SETA Head Start Classroom Building and Site Improvements  
175000.00


G. Schedule:

BUILDING EXTERIOR				
	Sym.	Abbrev.	Signage	Mounting
<b>International Symbol of Accessibility Signage</b>				
BUILDING		ISA	<ul style="list-style-type: none"> <li>❖ Application: Building Entrances</li> <li>❖ Size: Refer to details</li> <li>❖ Graphics <ul style="list-style-type: none"> <li>• Reflectorized white International Symbol of Accessibility (Wheelchair).</li> <li>• Reflectorized white text</li> <li>• Blue background (Color No. 15090 in federal Standard 595B)</li> </ul> </li> <li>❖ Text: Refer to details</li> </ul>	Wall or Glazing
		PR	Permanent Room Signage for rooms not already indicated <b><i>“Specific room name and number identification:”</i></b> <ul style="list-style-type: none"> <li>❖ Application: <ul style="list-style-type: none"> <li>• Wall set at strike side of door, u.n.o. due to configuration &amp; visibility</li> <li>• Install where Permanent Room sign is required and refer to drawings</li> </ul> </li> <li>❖ Size: Refer to details</li> <li>❖ Text: “(specific room name and number)”</li> <li>❖ Text Size: Refer to details</li> <li>❖ Colors: Custom as selected by <b><u>Architect</u></b> for all components</li> </ul>	
<b>“Fire Control Room” (Dual Signs)</b>				Door
BUILDING		FRD	<ul style="list-style-type: none"> <li>❖ Application: Door</li> <li>❖ Size: Refer to details</li> <li>❖ Text: “FIRE CONTROL ROOM”</li> <li>❖ Text size: Refer to details</li> <li>❖ Colors: Contrasting custom as selected by <b><u>Architect</u></b></li> </ul>	
<b>“Main Electrical Room” (Dual Signs)</b>				Door
BUILDING		MED	<ul style="list-style-type: none"> <li>❖ Application: Door</li> <li>❖ Size: Refer to details</li> <li>❖ Text: “MAIN ELECTRICAL ROOM”</li> <li>❖ Text Size: Refer to details</li> <li>❖ Colors: Contrasting custom as selected by <b><u>Architect</u></b></li> </ul>	

BUILDING EXTERIOR, CONTD.				
	Sym.	Abbrev.	Signage	Mounting
<b>Restroom Identification Signs for: “Men”, “Women”, “Boys”, “Girls” and “Unisex”</b>				
BUILDING		RDU	<ul style="list-style-type: none"> <li>❖ Application: Door (1 of 2 signs)</li> <li>❖ Size: Refer to details</li> <li>❖ Text: None</li> <li>❖ Shape: <ul style="list-style-type: none"> <li>• Unisex: Triangle set on top of circle</li> </ul> </li> <li>❖ Symbol: None</li> <li>❖ Color: Custom as selected by <b><u>Architect</u></b>.</li> </ul>	Door

**SIGNAGE**  
**10 14 00**

SETA Head Start Classroom Building and Site Improvements  
175000.00

		RRU	<ul style="list-style-type: none"> <li>❖ Application: Wall (2 of 2 signs)</li> <li>❖ Size: Refer to details</li> <li>❖ Type: Symbol and Tactile Signage</li> <li>❖ Text: <ul style="list-style-type: none"> <li>• Unisex: "UNISEX"</li> </ul> </li> <li>❖ Text Size: 2" max – 5/8" min height</li> <li>❖ Symbols: <ul style="list-style-type: none"> <li>• Men's / Boy's: Man/Boy &amp; ISA symbol</li> <li>• Women's: Woman/Girl &amp; ISA symbol</li> <li>• Unisex: Man and Woman &amp; ISA symbol</li> </ul> </li> <li>❖ Braille: Yes</li> <li>Colors: Symbol and text color shall contrast distinctly different from the color of the door; Contrasting custom as selected by <b><u>Architect</u></b>.</li> </ul>	Wall
--	---	-----	---	------

**2.03 OTHER MATERIALS**

- A. Provide other materials, not specifically described but required for a complete and proper installation, as selected by the **General Contractor** subject to the approval of the **Architect**

**PART 3 - EXECUTION**

**3.01 INSPECTION / EXAMINATION**

- A. Verification of Conditions:
1. Examine areas and conditions under which work is to be performed.
  2. Identify conditions detrimental to proper or timely completion of work and coordinate with **General Contractor** to rectify.
- B. Surface:
1. Examine and verify that receiving conditions of substrate have no defects or errors, which would result in poor or potentially defective application or cause latent defects in workmanship.
- C. Backing:
1. Coordinate that appropriate backing is installed for sign mounting.

**3.02 COORDINATION**

- A. Refer to Division 1 for project coordination requirements.
- B. **General Contractor** shall coordinate work as herein specified, in accordance with drawings and as required to complete scope of work with all related trades.

**3.03 PREPARATION**

- A. Prepare work, substrates, etc. in accordance with manufacturer's recommendations.
- B. Take all necessary measurements in the field to ensure proper dimensions.

**3.04 FABRICATION**

- A. Fabricate signs in compliance with drawings, applicable codes, agencies having jurisdiction and ATBCB ADAAG - Americans with Disabilities Act Accessibility Guidelines.

**3.05 INSTALLATION**

- A. General:
1. Prior to installation, carefully inspect and verify that the installed work of other trades is complete to the point where this installation may properly commence.
  2. Verify that specified items may be installed in accordance with the approved design.
  3. Signage Mounting:
    - a. Locations of all signs must be approved by the **Architect** prior to installation.
    - b. Refer to specific sign type for mounting requirements.



**SIGNAGE**  
**10 14 00**

SETA Head Start Classroom Building and Site Improvements  
175000.00

- c. Coordinate with Drawings
- B. Identifying Devices
  - 1. Install identifying devices in accordance with accepted Shop Drawings and Drawings.
- C. Fastening
  - 1. Use fasteners as herein specified.

**3.06 FIELD QUALITY CONTROL**

- A. Product manufacturer shall provide field service support as requested by the Installer/Applicator.
  - 1. The Applicator shall be responsible for the proper application of the materials.
- B. The Applicator shall certify in writing the quality of work performed relative to the substrate system, details, installation procedures and workmanship is in accordance with project specifications and manufacturer's instructions.

**3.07 PROTECTION AND CLEAN UP**

- A. Refer to Division 1 for protection and cleaning requirements.
- B. Subcontractor will keep the work areas in a clean and safe condition so his rubbish, waste, and debris do not interfere with the work of others.
- C. Protect work and materials of this Section prior to and during installation, and protect the installed work and materials of other trades.
  - 1. Clean adjacent surfaces free of caulking or sealant with mechanical action or solvent as necessary, avoiding damage to other materials.
- D. Perform work in accordance with manufacturer's recommendations, as herein specified and in accordance with drawings.
- E. In the event of damage, immediately make all repairs and replacements necessary to the approval of the **Architect** and at no cost to the **Owner**.
- F. After completion of work in this section, remove all erection equipment and implements of service, and debris.
- G. Provide Guarantee/Warranties and Bonds as required in this specification section and as listed in Division 1 closeout submittal procedures.
- H. Provide record drawings in accordance with Division 1 closeout submittal procedures.
- I. Close out, on-site inspection will be at the discretion of the **Architect** after he receives the **General Contractor's NOTICE** of "Certificate of Substantial Completion".

**END OF SECTION**



TODD HARMS  
Fire Chief

# Sacramento Metropolitan Fire District

Community Risk Reduction Division

[www.metrofire.ca.gov](http://www.metrofire.ca.gov)

10545 Armstrong Ave., Suite 310 • Mather, CA 95655 • Phone (916) 859-4330 • Fax (916) 859-3717

SACRAMENTO METROPOLITAN FIRE DISTRICT			
FIRE PREVENTION STANDARD			
STANDARD TITLE:	Fire Control Rooms		
STANDARD NUMBER:	17	EFFECTIVE DATE:	10/05/06 REVISION DATE: 01/01/17

## SCOPE

This standard is for the requirement, construction, and placement of fire control rooms in commercial buildings and is pursuant to Section 509.3 of the 2016 California Fire Code and Local Ordinance.

## DEFINITIONS

**Fire Control Room** – contains all fire sprinkler system risers, fire alarm control panels, spare sprinklers and wrench and other fire equipment required by the Chief.

**Fire Riser Room** - contains all fire sprinkler system risers, spare sprinklers and wrench.

## SPECIFICATIONS

All new commercial buildings, including multi-family occupancies that require the installation of a fire sprinkler system, will require a Fire Control or Fire Riser Room in accordance with this standard. This standard also applies to existing buildings that require the installation of a fire sprinkler system.

1. Fire control rooms shall have a minimum dimension of 5 feet and not be less than 35 square feet in usable area. (CFC 509.3)
2. Fire riser rooms shall have a minimum dimension of 2 feet and not be less than 8 square feet in usable area. Fire riser rooms are applicable to new multi-family buildings (apartments, condominiums and town homes) only. (CFC 509.3)
3. Fire control rooms shall be located within the building on an outside wall at a location approved by the Chief, and shall be provided with a means to access the room directly from the exterior with an approved door of minimum dimensions of 36 inch x 80 inch. (CFC 509.3)
4. Minimum one foot candle illumination shall be provided in Fire control rooms. In the event of power supply failure, an emergency power supply shall be provided.

**SACRAMENTO METROPOLITAN FIRE DISTRICT**  
**FIRE PREVENTION STANDARD**

STANDARD  
TITLE:

**Fire Control Rooms**


STANDARD  
NUMBER:

**17**

EFFECTIVE DATE: **10/05/06**

REVISION DATE: **01/01/17**

5. Permanent signage shall be provided on the exterior side of the access door to identify the fire control room. The sign shall indicate "FIRE CONTROL ROOM" or "FIRE RISER ROOM", as applicable, with minimum 3 inch letters that contrast with their background. (CFC 509.1)
6. A key shall be located within an approved high level Fire District Knox Company key box located adjacent to, and on the latch side of, the access door on the exterior of the building at 6 feet above the finished floor. (CFC 506.1)
7. Fire control rooms shall contain all fire sprinkler risers, fire alarm panels, spare sprinklers and wrench and other fire equipment required by the Chief. (CFC 509.3)
8. The fire sprinkler riser shall be located on the outside wall, 12-24 inches from that outside wall and at least 12 inches from any other wall. (NFPA 13 6.3.1.1.1)
9. The fire control room may contain other building service equipment. Service equipment shall not be within 3 feet in front of any fire equipment in the room. (CFC 605.3)

  
Maurice Johnson, AC/Fire Marshal

**BIDDERS INFORMATION FORM****ATTACHMENT D**

SETA's Invitation for Sealed Bid - General Contractor Services

TO THE SACRAMENTO EMPLOYMENT AND TRAINING AGENCY (SETA)

The undersigned hereby proposes and agrees to furnish any and all required labor, material, equipment, transportation and services for construction of the Hopkins Park Head Start Modular Project, in strict conformity with the Drawings and Project Manual, all of which may be obtained through **Signature Reprographics**, 620 Sunbeam Avenue, Sacramento, CA 95811 (916) 454-0800.

BASE BID:

\_\_\_\_\_ DOLLARS

(\$ \_\_\_\_\_ )

Additive Alternate #1:

\_\_\_\_\_ DOLLARS

(\$ \_\_\_\_\_ )

Allowance (fire sprinklers and applicable underground):

FORTY THOUSAND DOLLARS

(\$40,000)

**TOTAL BID (Base + Alternate + Allowance)**

\_\_\_\_\_ DOLLARS

(\$ \_\_\_\_\_ )

**SCHEDULE FOR COMPLETION:**

Construction: June 1, 2018 – July 31, 2018 – 61 calendar days

The undersigned, upon notice of the acceptance of the bid within fifteen (15) days after the date of opening of the bids, hereby agrees to sign the Construction Agreement and furnish the necessary bonds within ten (10) days after notice of the acceptance of the bid.

The undersigned has examined the location of the proposed work and is familiar with the Drawings, Project Manual and the local conditions at the place where the work is to be done.

The undersigned has checked carefully all of the above figures and understands that SETA will not be responsible for any errors or omissions on the part of the undersigned in making up this bid.

The undersigned acknowledges that the SETA reserves the right to reject any and all bids and/or waive any irregularities or informalities in the bidding.

(If applicable) Enclosed find Bidder's Bond, from a surety company registered with the State of California Insurance Commissioner, or Cashier's Check in the amount of 5% of the bid; Cashier's Check No. \_\_\_\_\_ of the \_\_\_\_\_ Bank for \_\_\_\_\_.

**ASSURANCES AND CERTIFICATION**

I, (We), the undersigned, as the duly authorized representative(s) of the respondent agency, affirm that the information and statements contained within this proposal, to the best of my (our) knowledge, are truthful and





2250 Douglas Blvd, Suite 200  
Roseville, CA 95661  
O:916.772.7688  
F:916.772.7699  
[www.kpff.com](http://www.kpff.com)

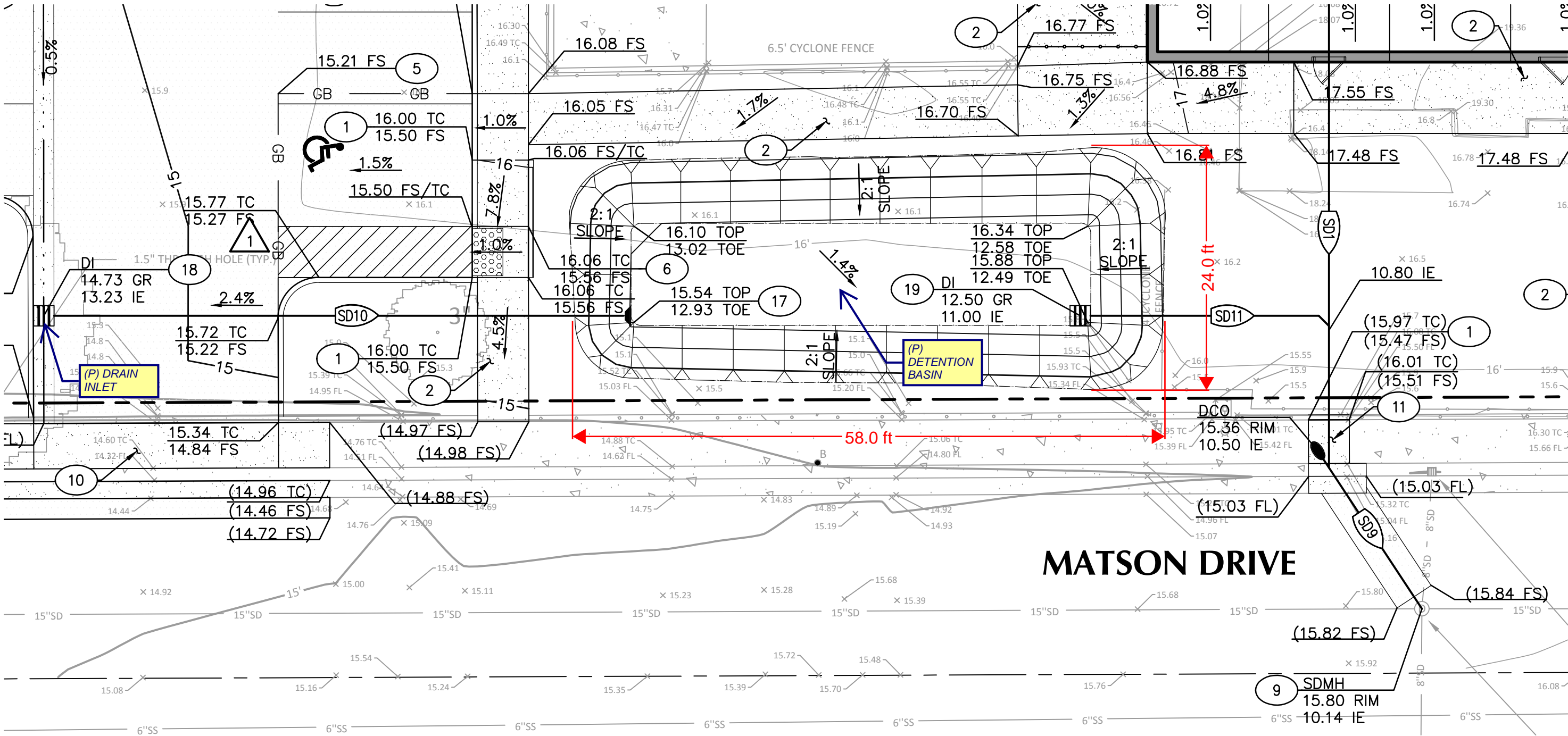
Project

SETA MODULAR CLASSROOMS  
2317 MATSON DRIVE  
SACRAMENTO, CA

Sheet Title

STORM WATER  
BASIN EXHIBIT

Date 05/11/2017  
Designed CER  
Drawn CER  
Checked RC  
JOB NO. 1700-354  
Drawing No.  
CSK-001



SOUTHERN STORM DRAIN BASIN AND PIPING

GRADING & UTILITY KEYNOTES

- (17) CONSTRUCT STORM DRAIN FLARED END SECTION PER DETAIL 1/C5.1
- (18) CONSTRUCT STORM DRAIN INLET PER DETAIL 2/C5.2
- (19) CONSTRUCT STORM DRAIN INLET WITH 3.5" ORIFICE PER DETAIL 3/C5.3

Sketch  
C3.0a

STORM DRAIN DATA TABLE

No.	LENGTH	REMARKS
SD10	60.0'	6" SDR 35 PVC @ 0.5%
SD11	27.0'	6" SDR 35 PVC @ 0.7%