

Energizing Equity in Sacramento

Susan Wheeler, SMUD Regional Workforce Development Program Manager



Powering forward.
Together.





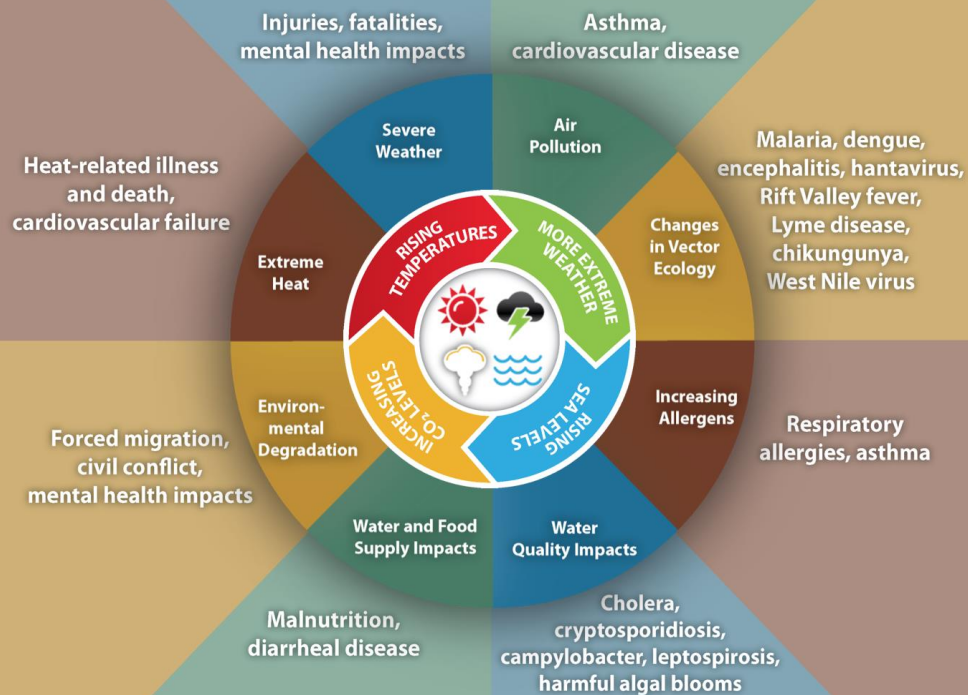
Economic indicators show significant disparities are growing across between the haves and have-nots.

“...Sacramento Region’s leaders must take on the difficult but important civic work to assure sustained growth and prosperity.”

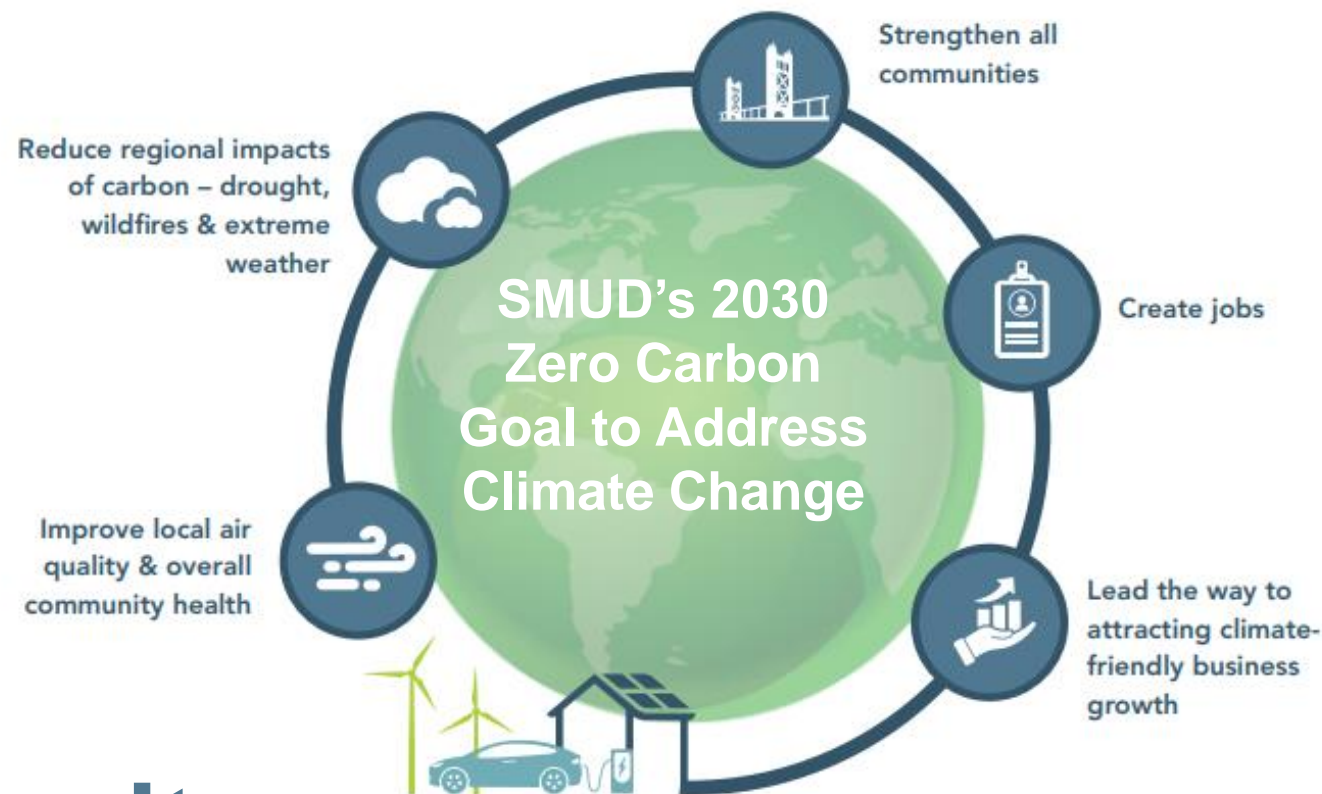
~ *Brookings: Charting a Course to the Sacramento Region’s Future Economic Prosperity*



Impact of Climate Change on Human Health



“Climate change challenges our commitment to achieve equity in health and wellbeing in California, as it deepens the need to take actions that reduce vulnerabilities and increase resilience to climate change in our communities.”



Climate Change & Equity

Sustainable Communities Resource Priorities Map

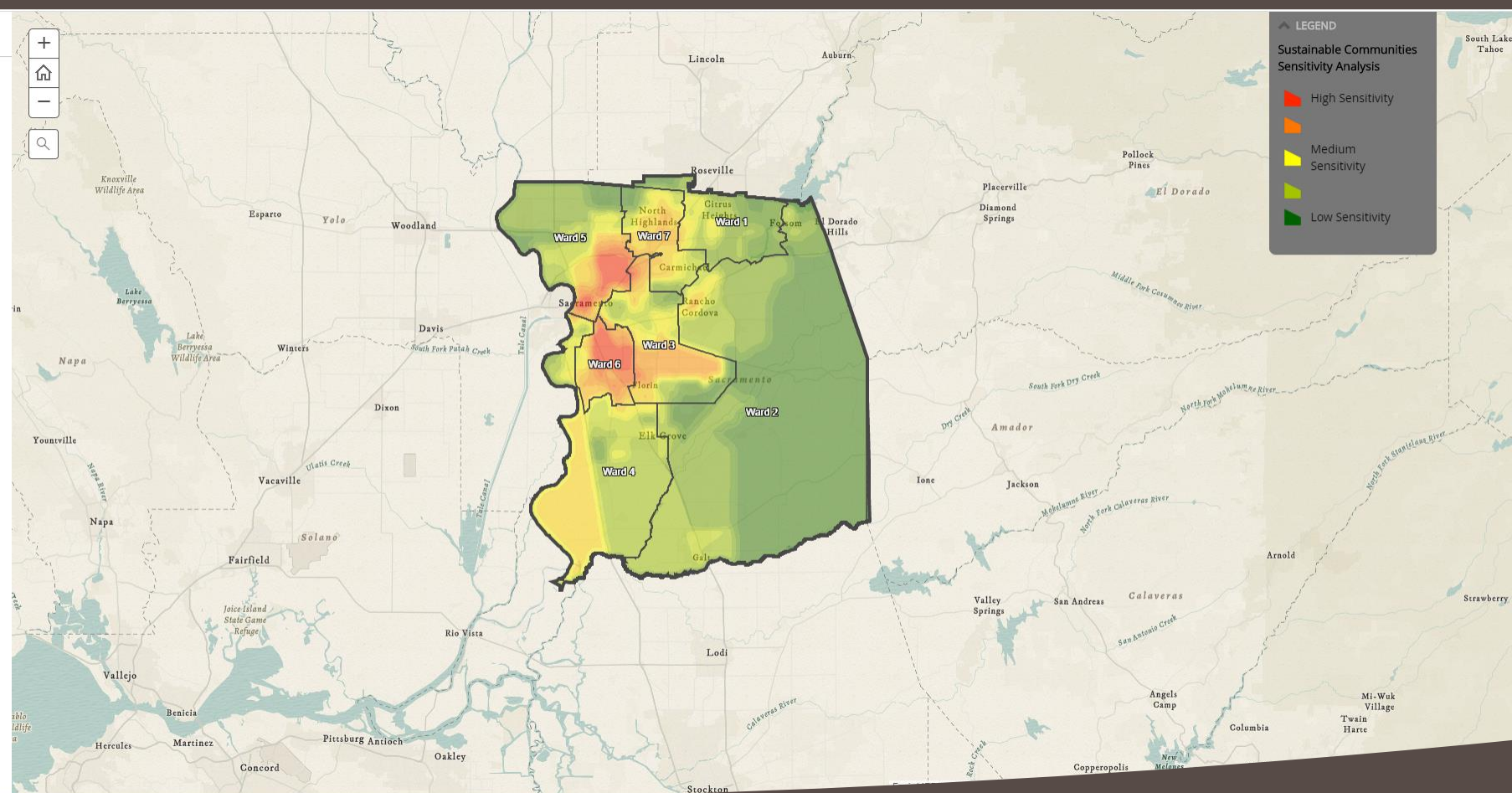


Strengthening our neighborhoods. Together.

In order to deploy comprehensive resources for our communities most in need, we must align our region's investments toward the goal of creating and supporting healthy, vibrant and economically sustainable neighborhoods.

This interactive map helps analyze current data to indicate the local areas most likely to be underserved or in distress by lack of community development, income, housing, employment opportunities, transportation, medical treatment, nutrition, education and clean environment.

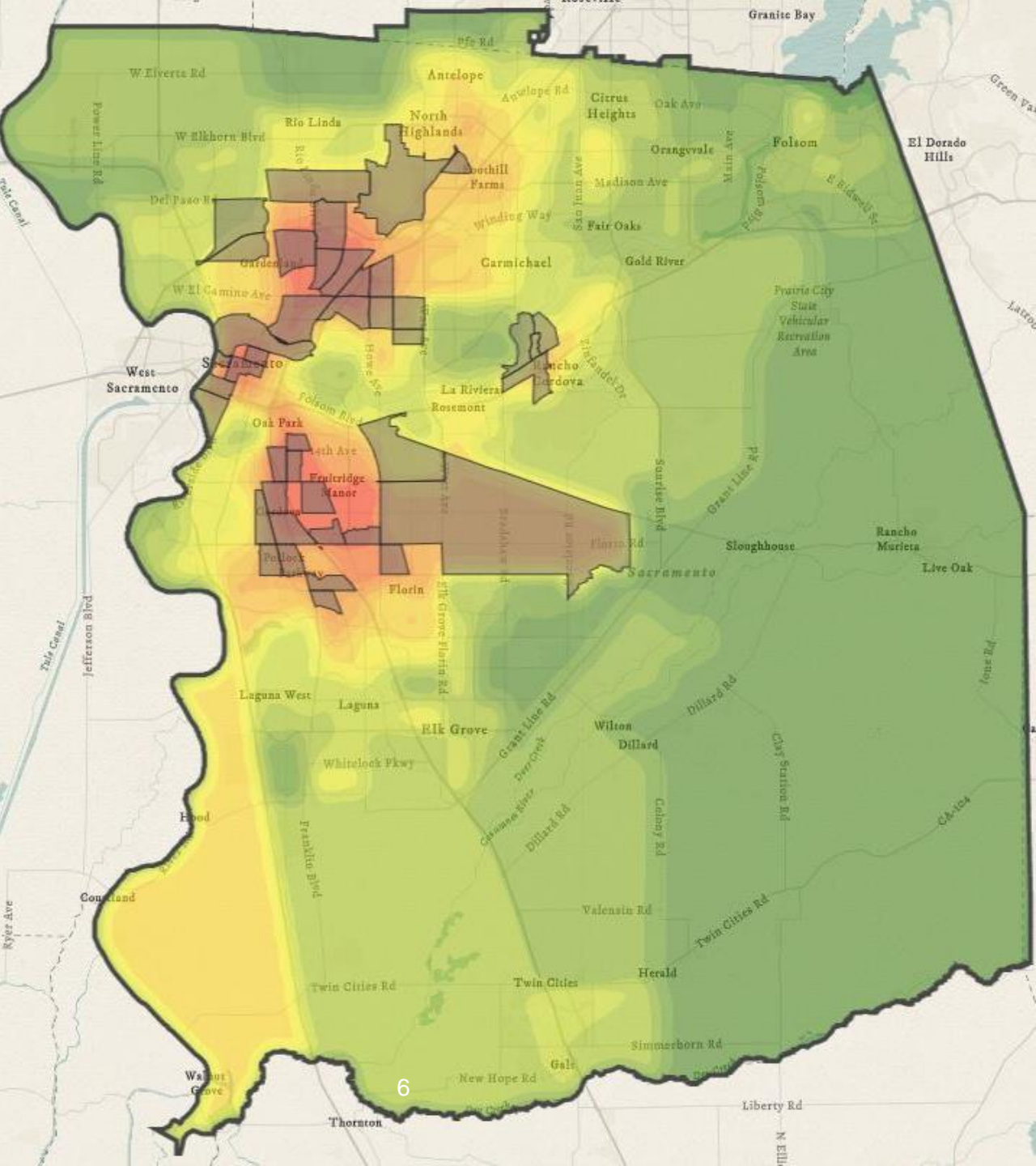
Scroll down through each section to reveal a different view of the map. On the left is an explanation of the nature of the vulnerability being examined and the criteria used for identifying the communities at greatest risk. You can then click on various places on the map to reveal more details of each highlighted area.



Sustainable Communities Resource Priorities Map

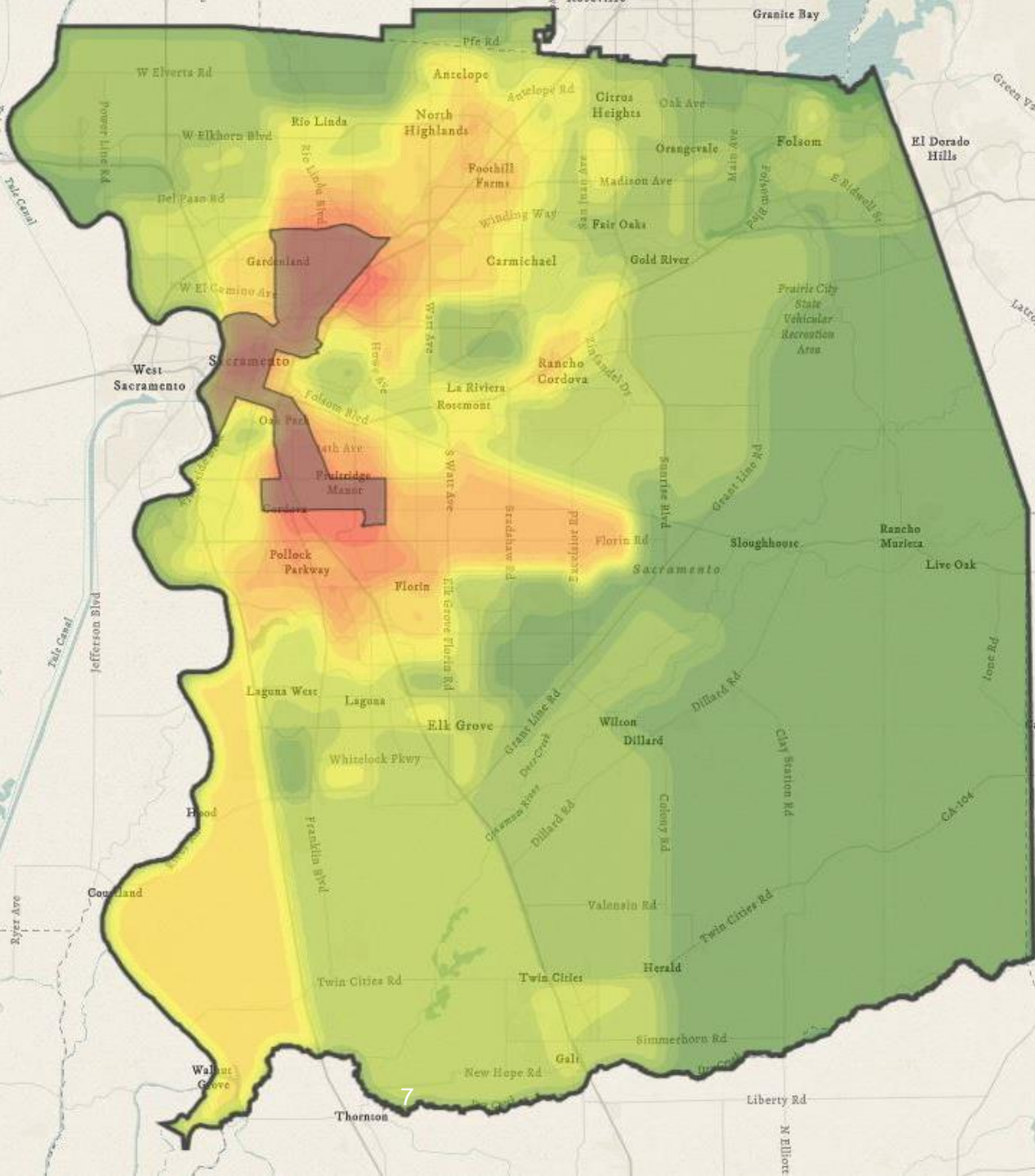
Opportunity Zones

Federally Designated Census Tracts to support affordable housing, sustainability and job needs.



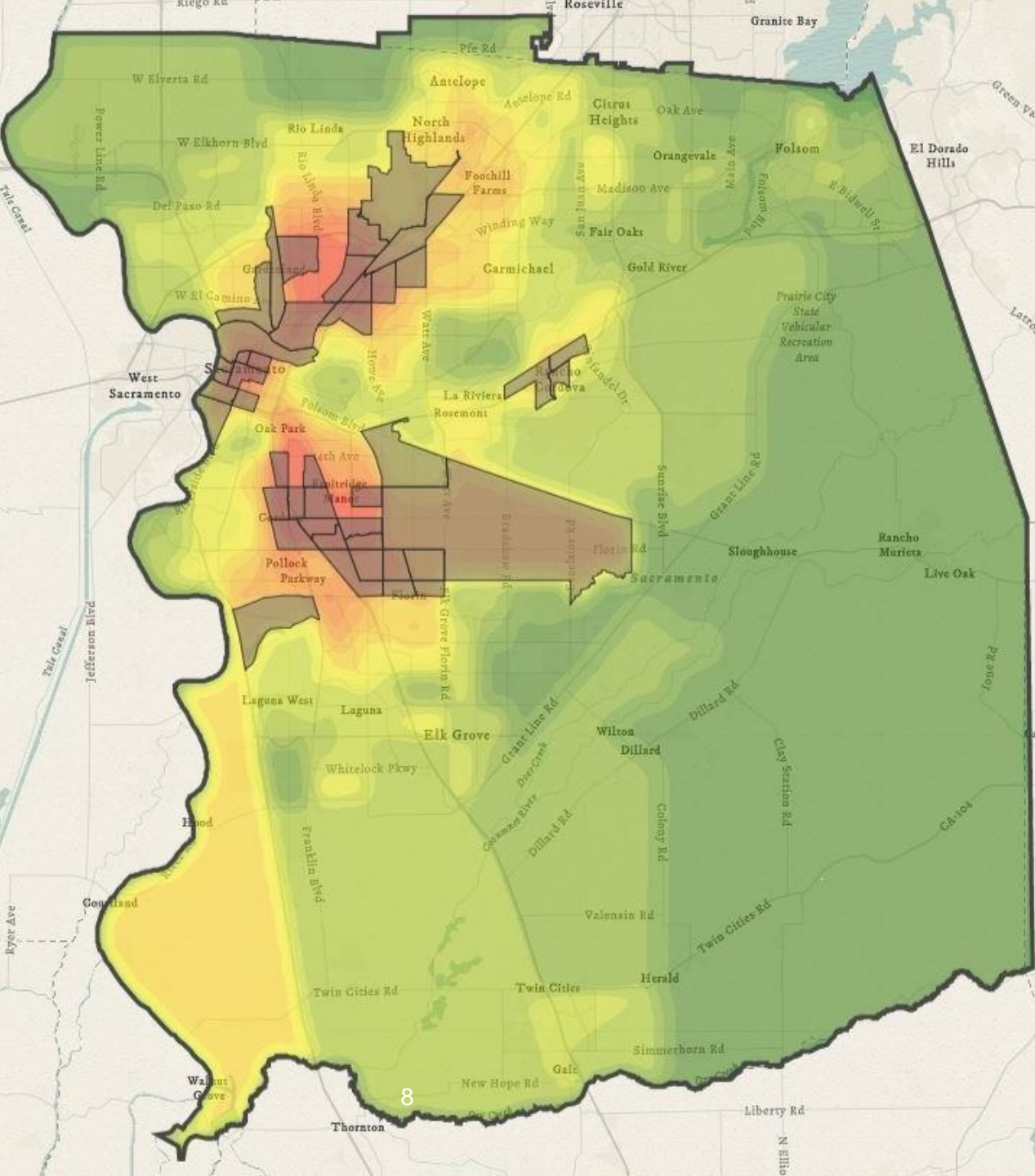
Sacramento Promise Zone

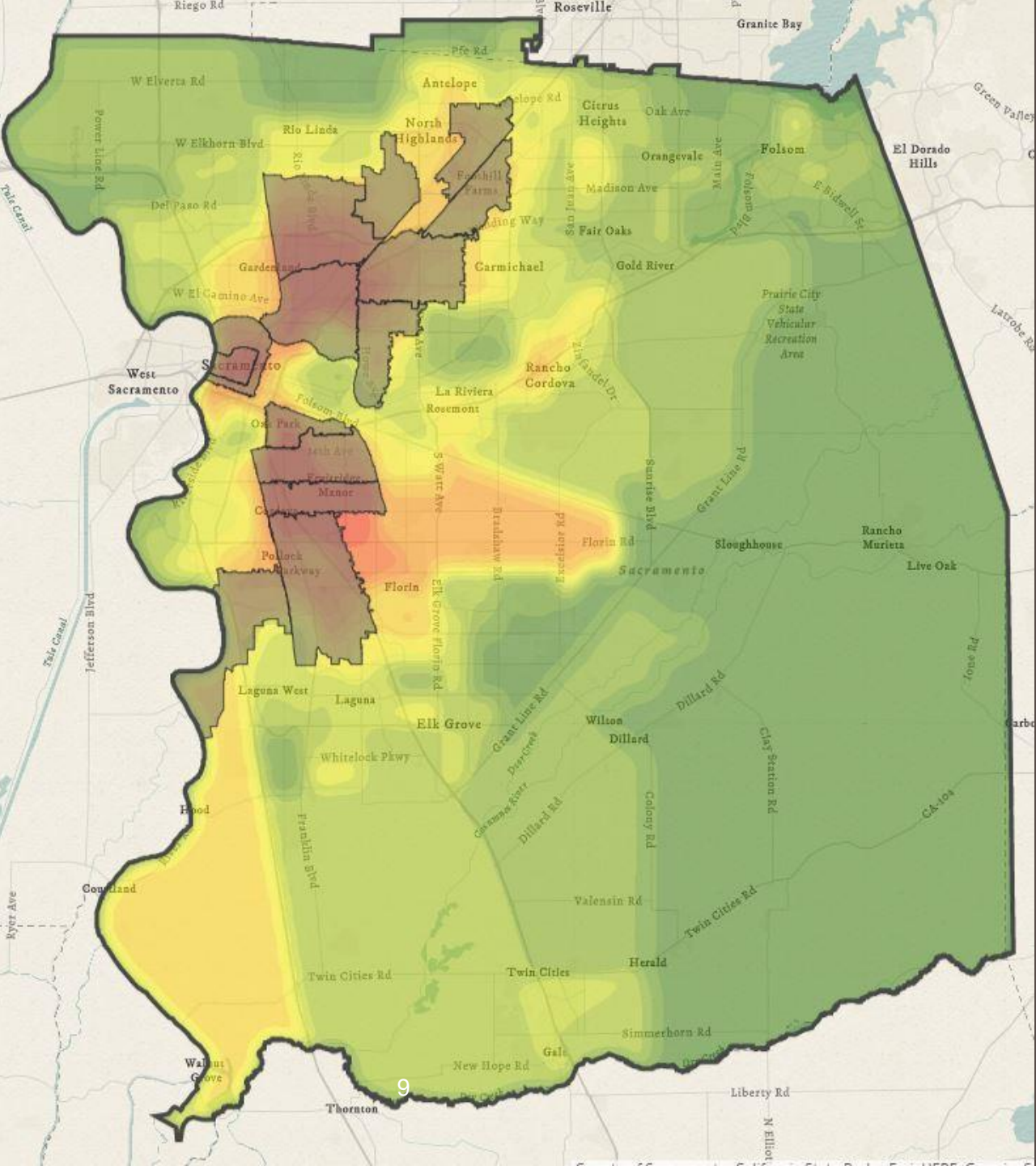
Federal Neighborhood Revitalizations Zones in the area's most distressed neighborhoods.



SB 535 Disadvantaged Communities

SB 535 state designated areas focusing on economically and environmentally distressed communities



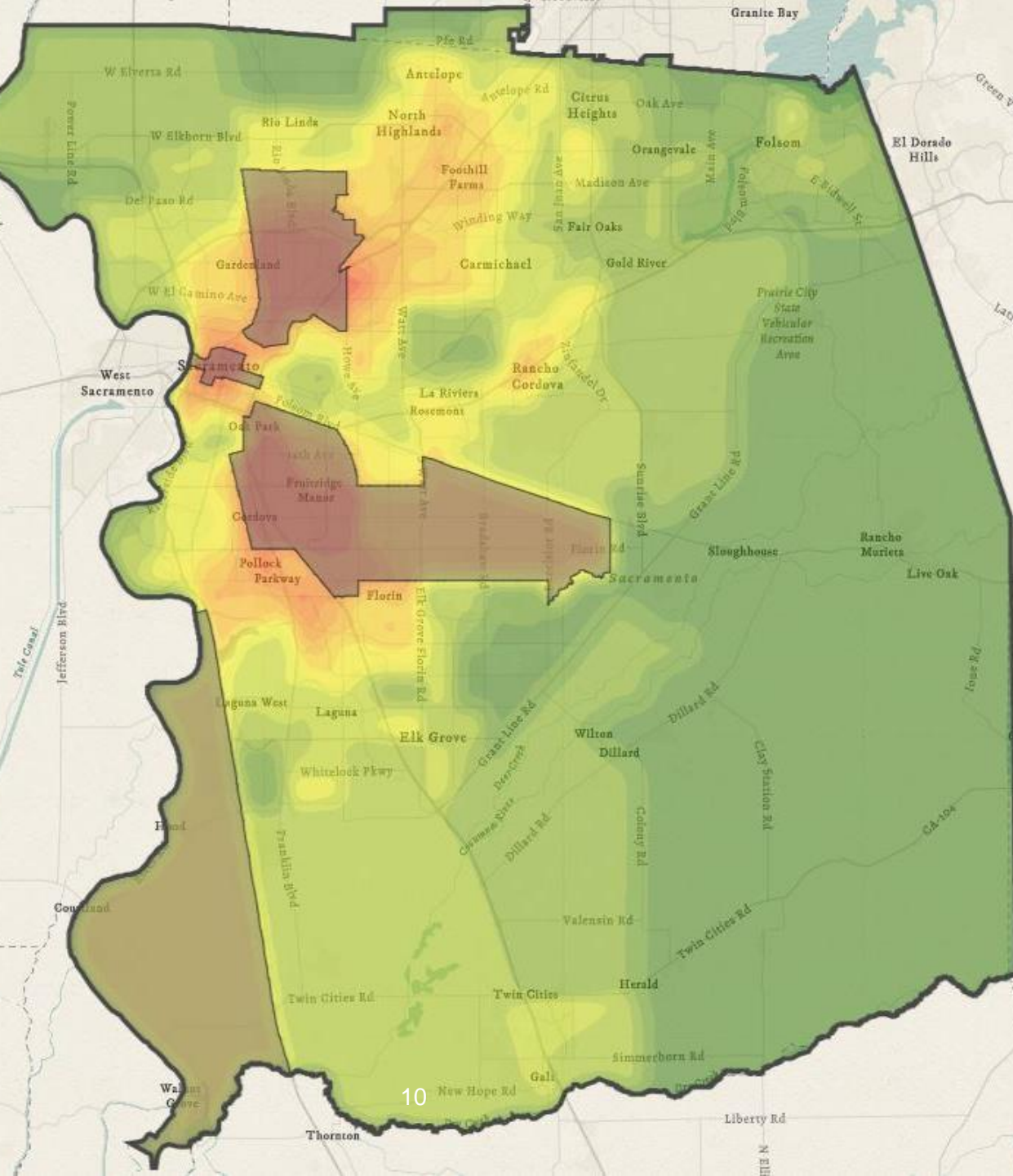


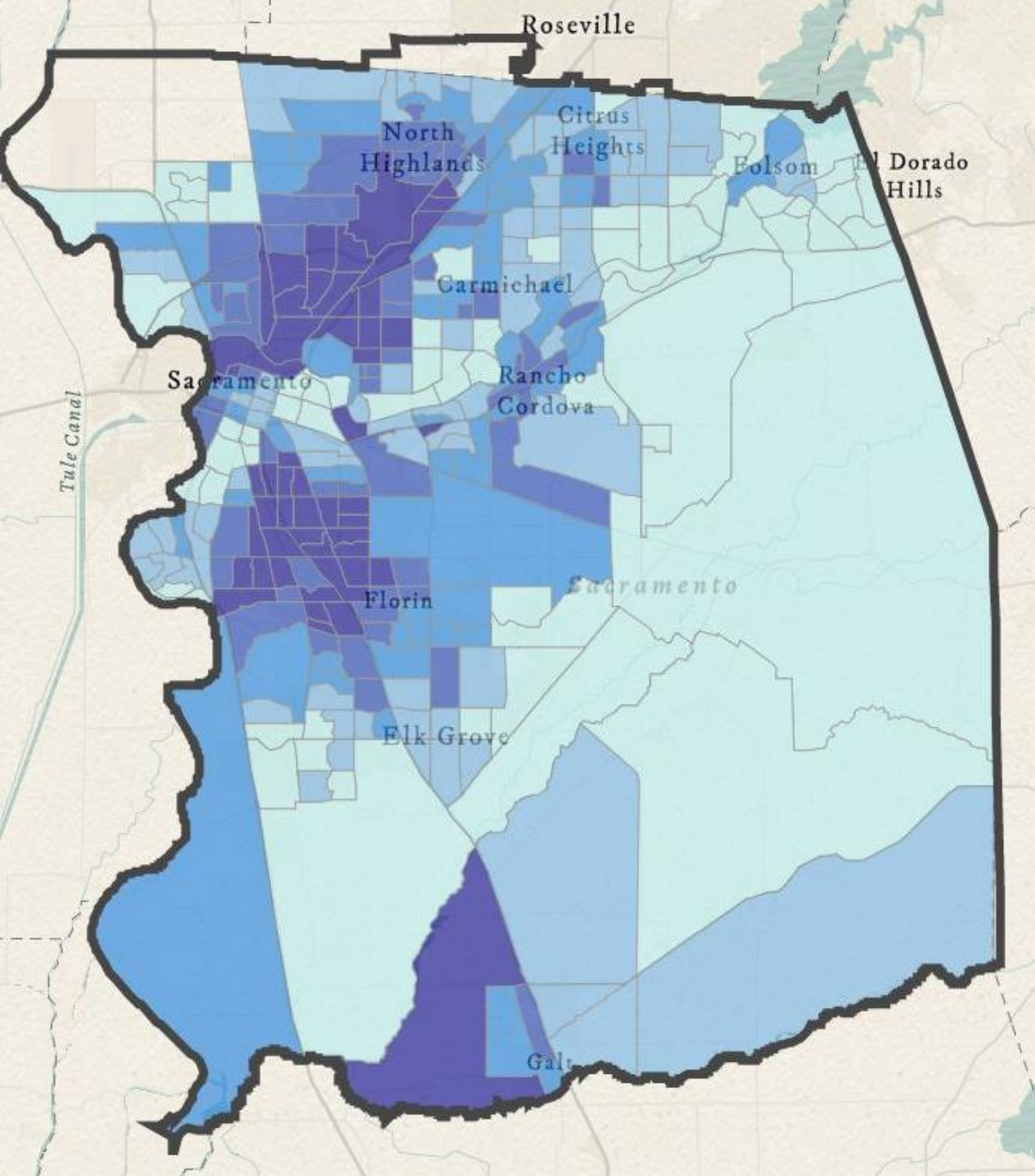
Sacramento Poverty Zip Codes

Zip Codes where a minimum of 25% of the population are below the poverty line.

Medically Underserved Areas

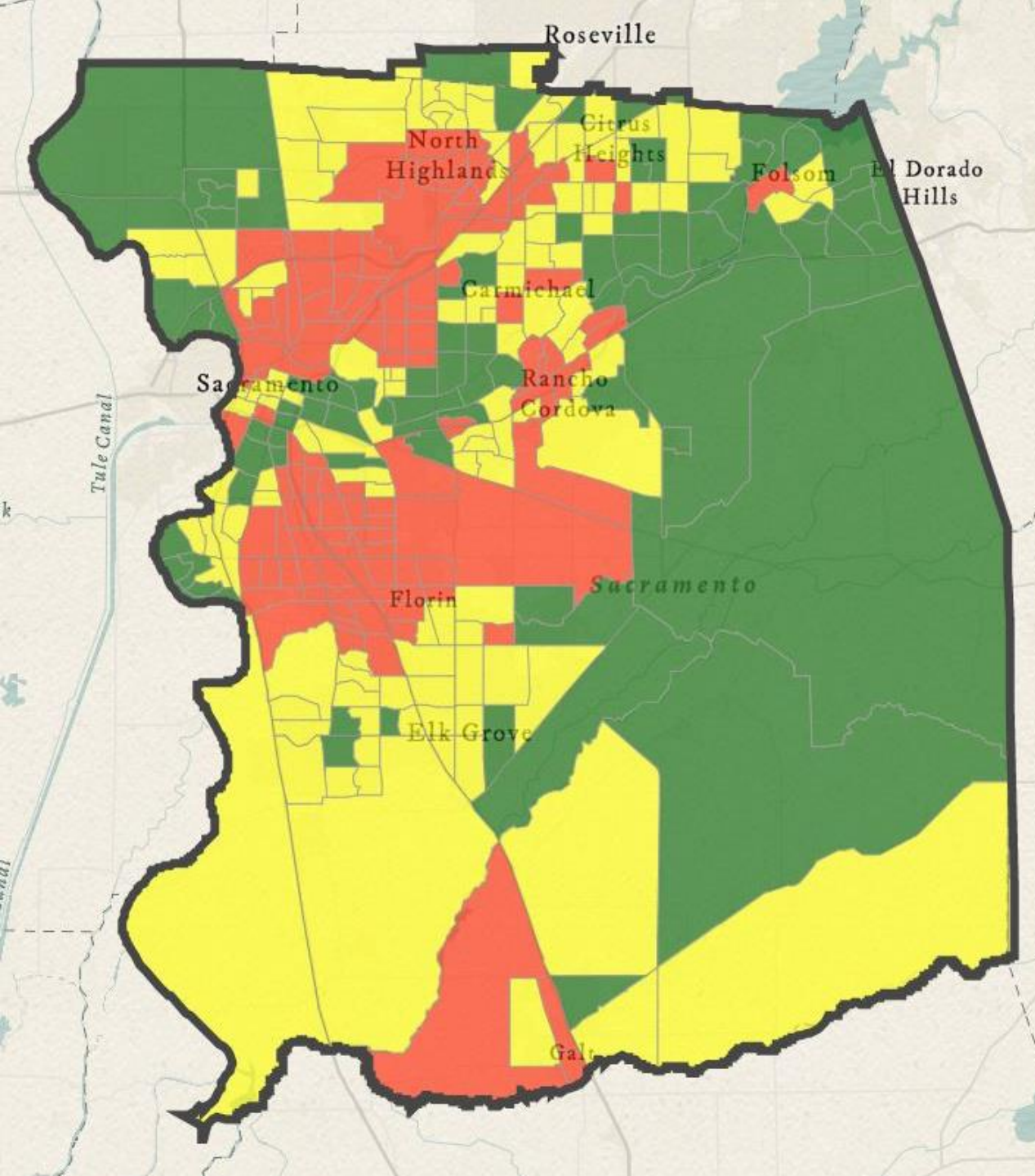
HRSA designated areas with higher infant mortality, elderly population, and access to medical care.





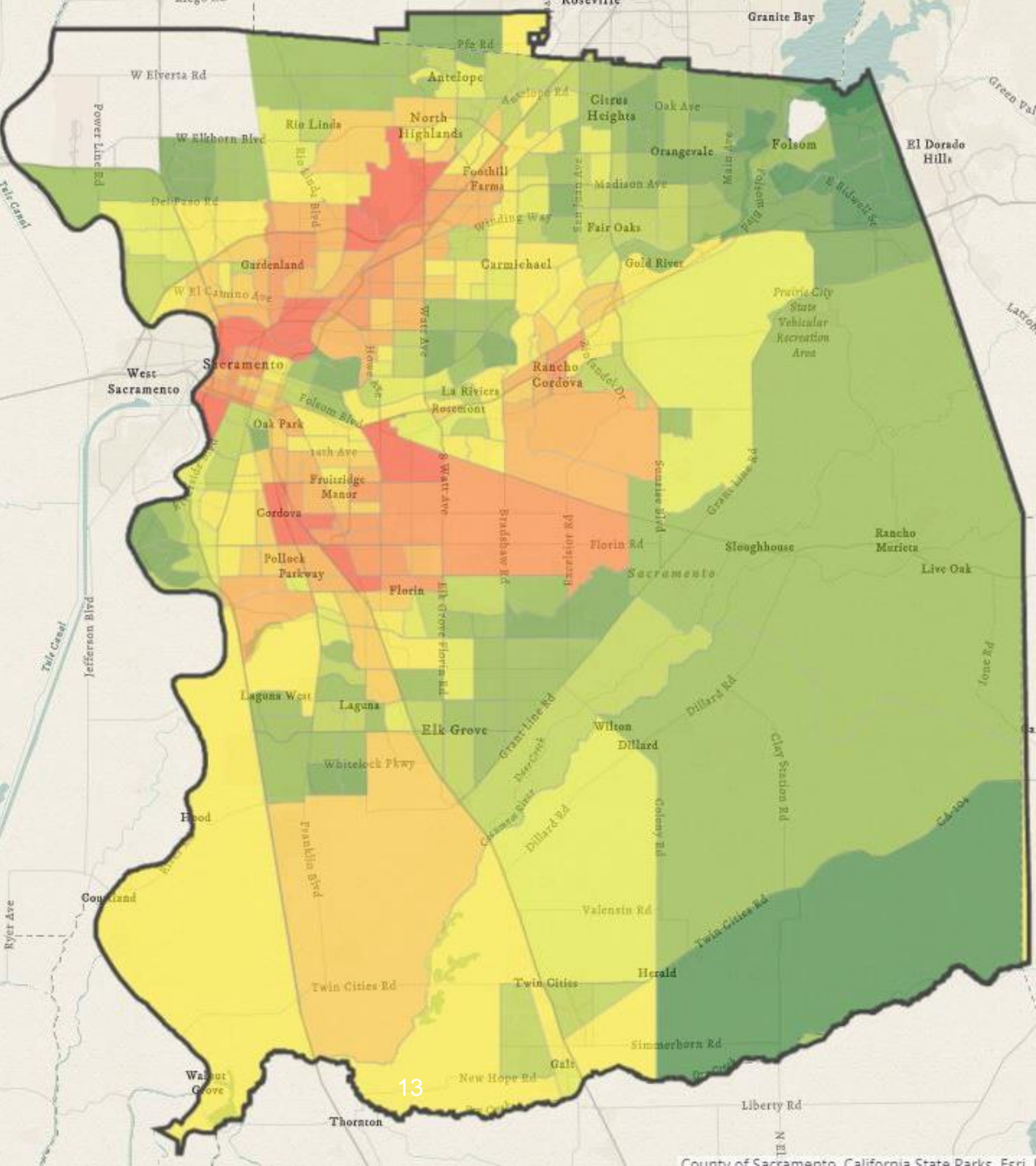
Be Healthy Sacramento

Health Equity Index



Social Vulnerability Index

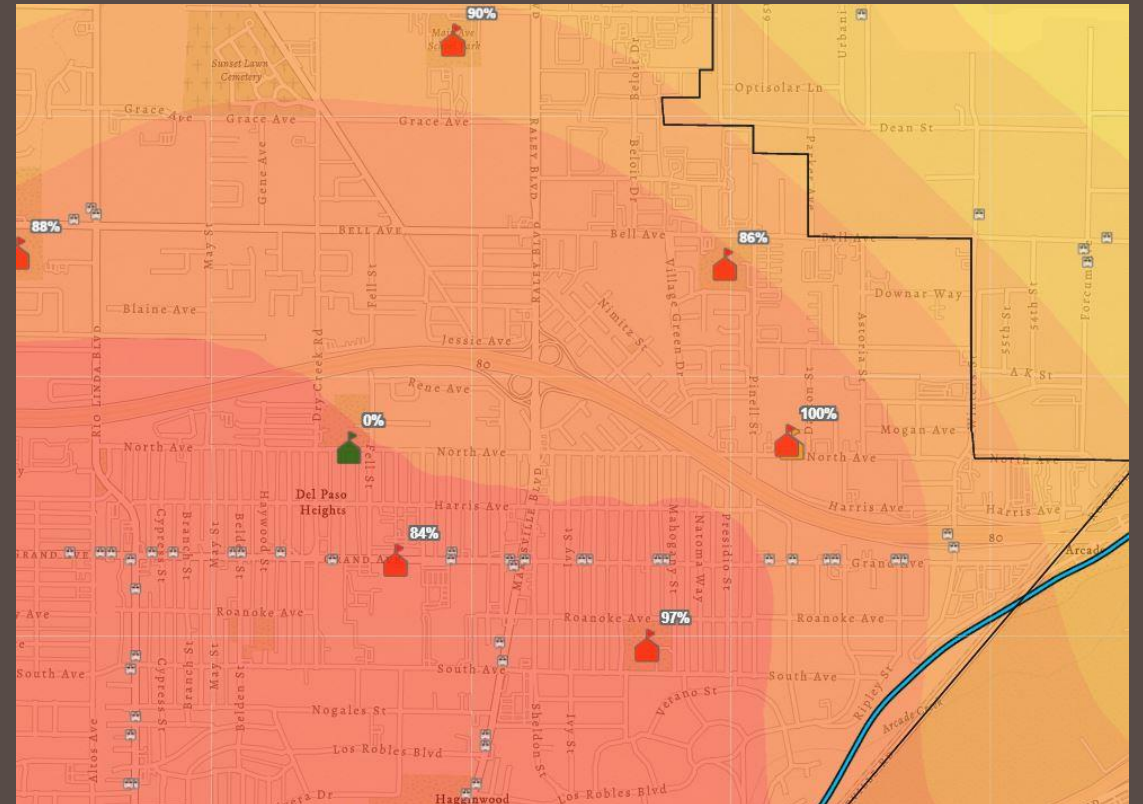
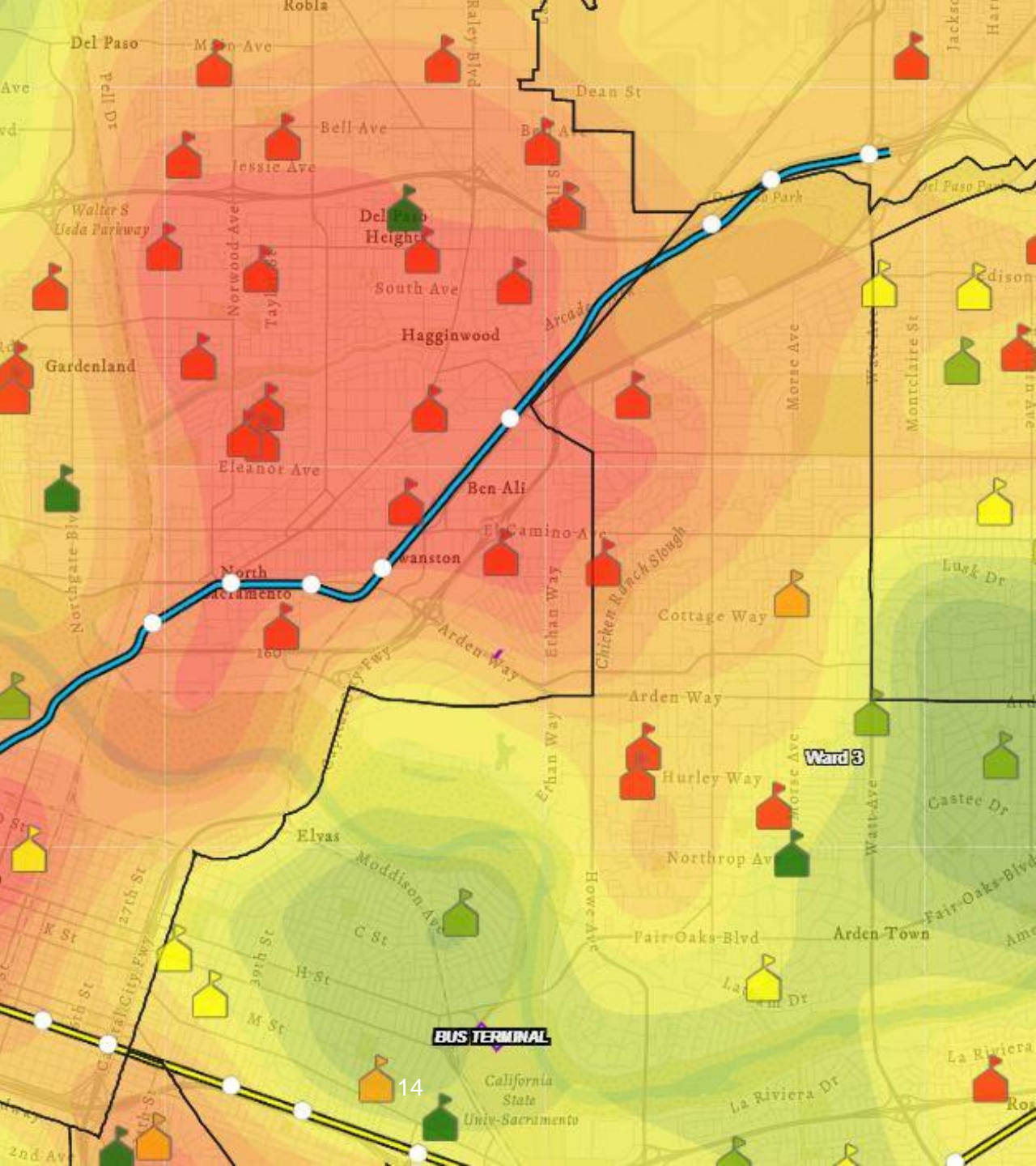
Measures the risk of environmental stressors as well as financial ability and resilience to respond to these disasters.



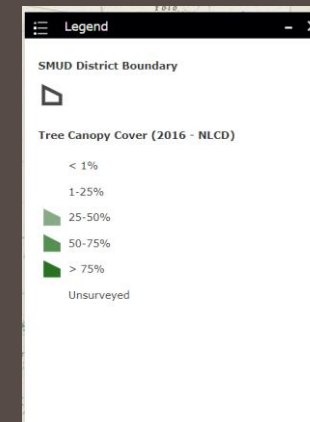
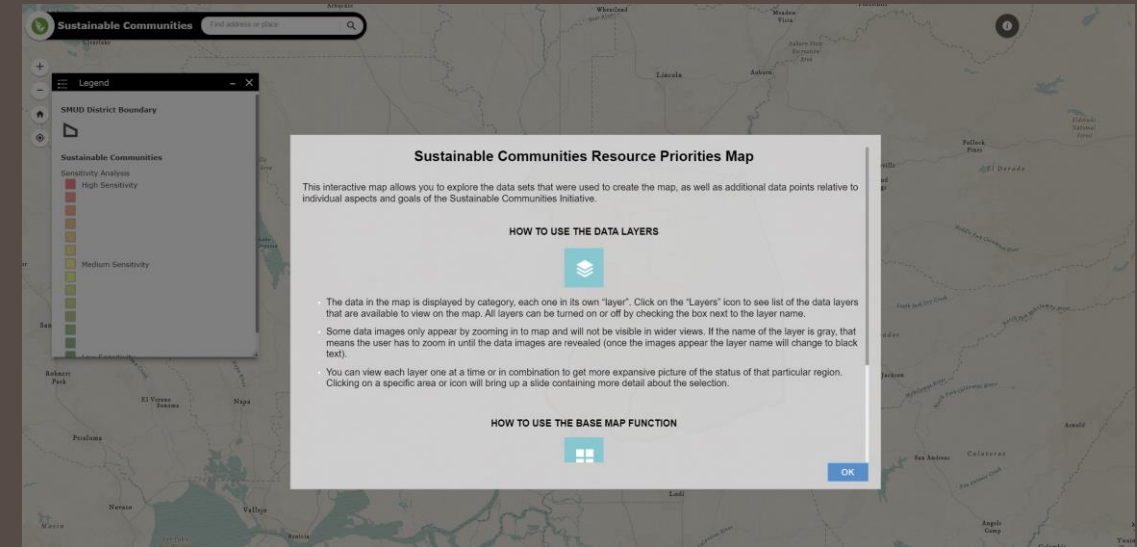
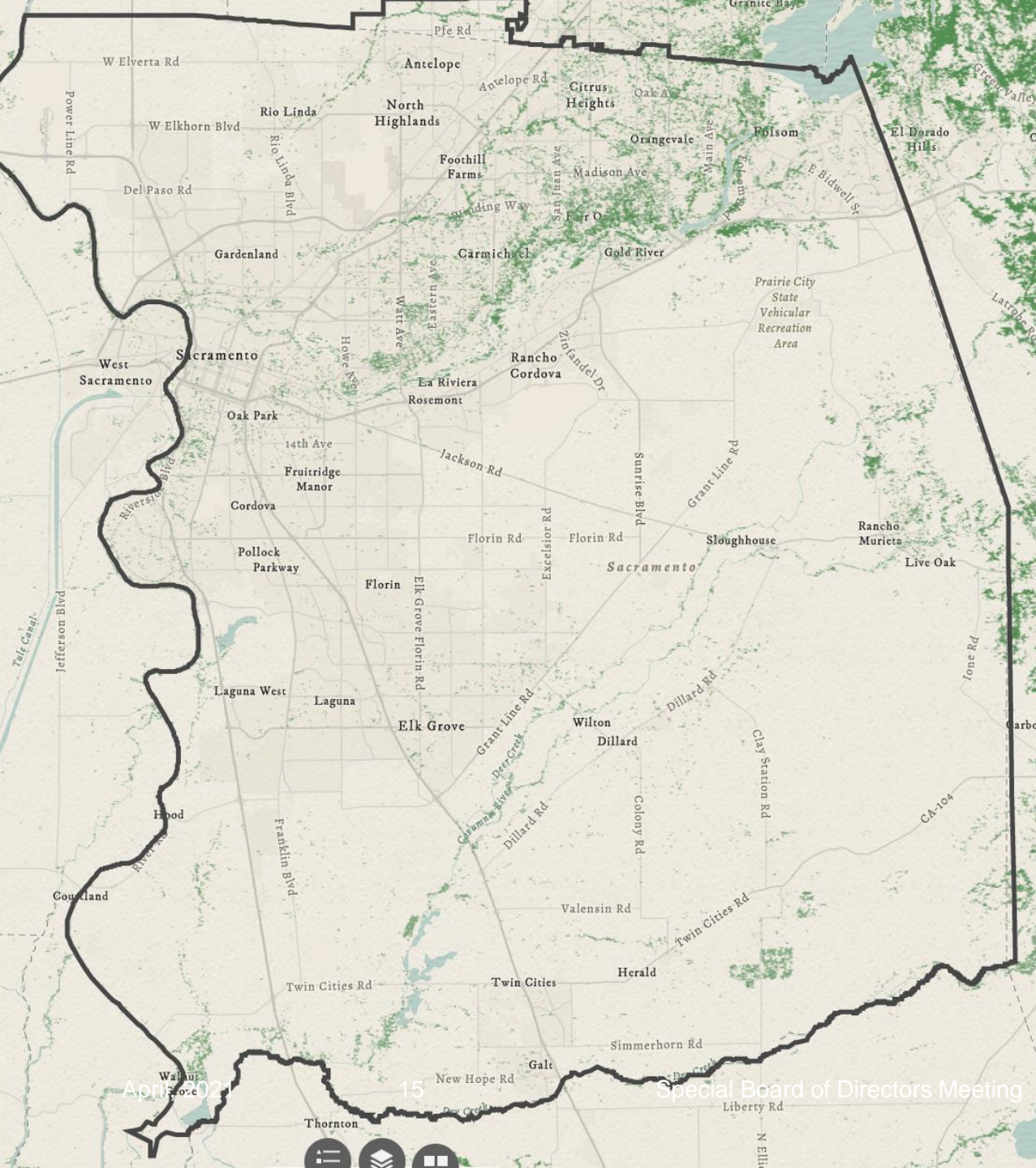
Environmental Justice

Cal Enviroscreen Map evaluates census tract that are disproportionately burdened by and vulnerable to multiple sources of pollution.

Neighborhood Focused Data



Data Layers Example: Tree Canopy



Additional Data Layers

- District/Jurisdictional Boundary Layers
- EV Charging Locations
- Health Organizations
- Sacramento Metro Air Quality Management District (SMAQMD) EV Data
- Additional Climate Impact Data
- Tree Canopy
- Free or Reduced Price Meals (FRPM) School Data
- Transportation
- Food Access
- Digital Access

Q&A

Susan Wheeler
(916) 732-6540
susan.wheeler@smud.org

<https://www.smud.org/en/Corporate/Landing/Sustainable-Communities>

https://usage.smud.org/SustainableCommunities/?_ga=2.13753783.1275316611.1668531965-070dacc5-10d3-4524-aff9-a363eb690cf3