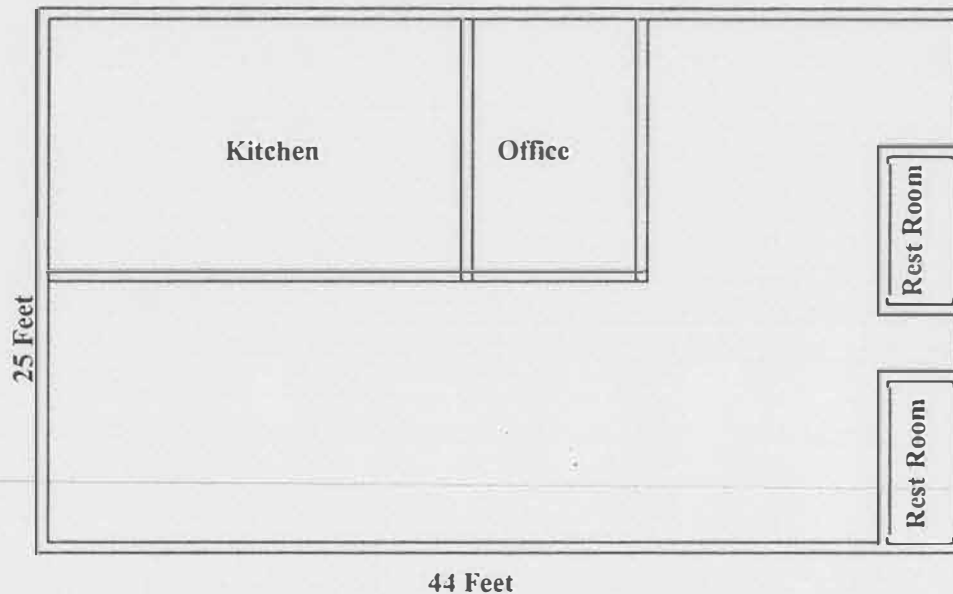


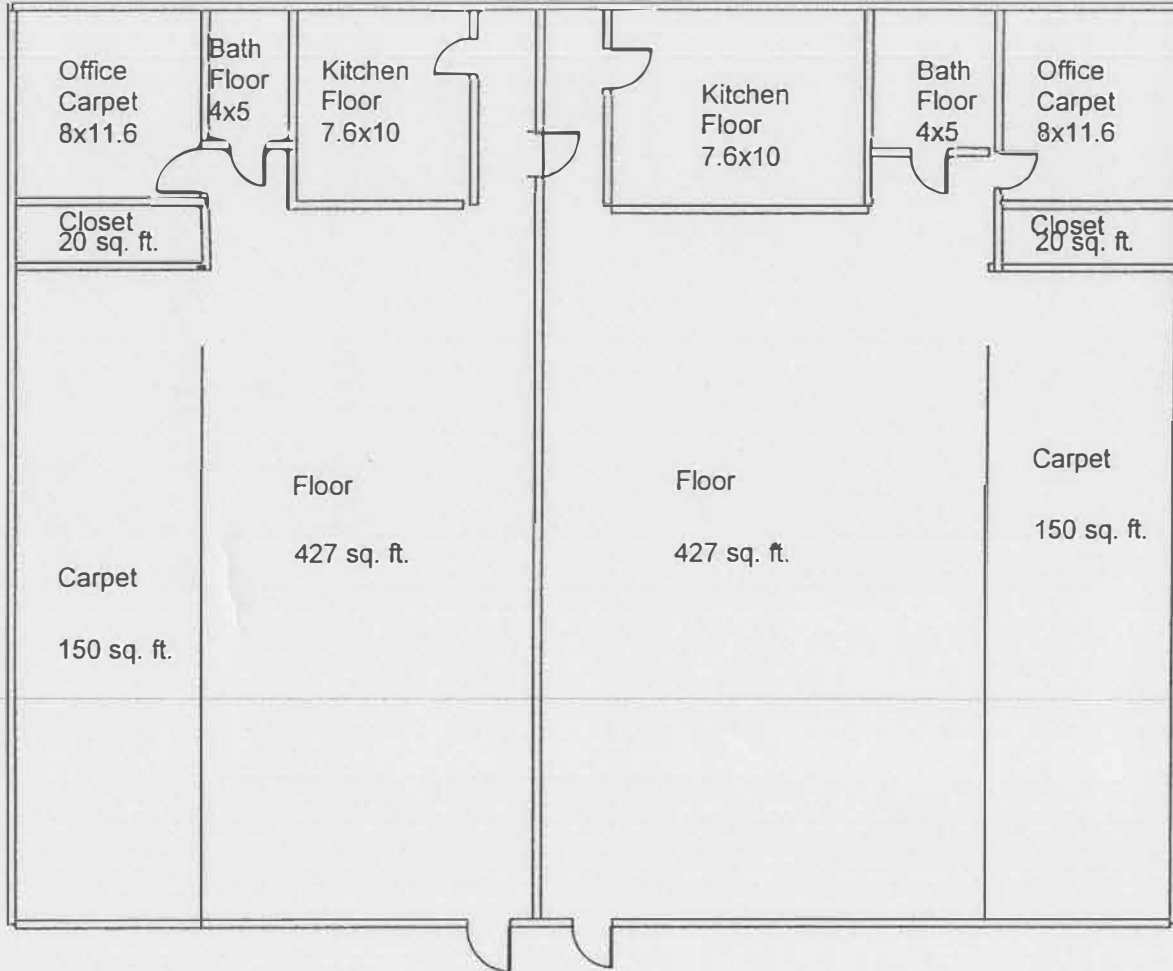
2017  
JANITORIAL RFP  
SITE PLANS



## **ALDER GROVE ELC**

**816 REVERE STREET  
SACRAMENTO, CA**

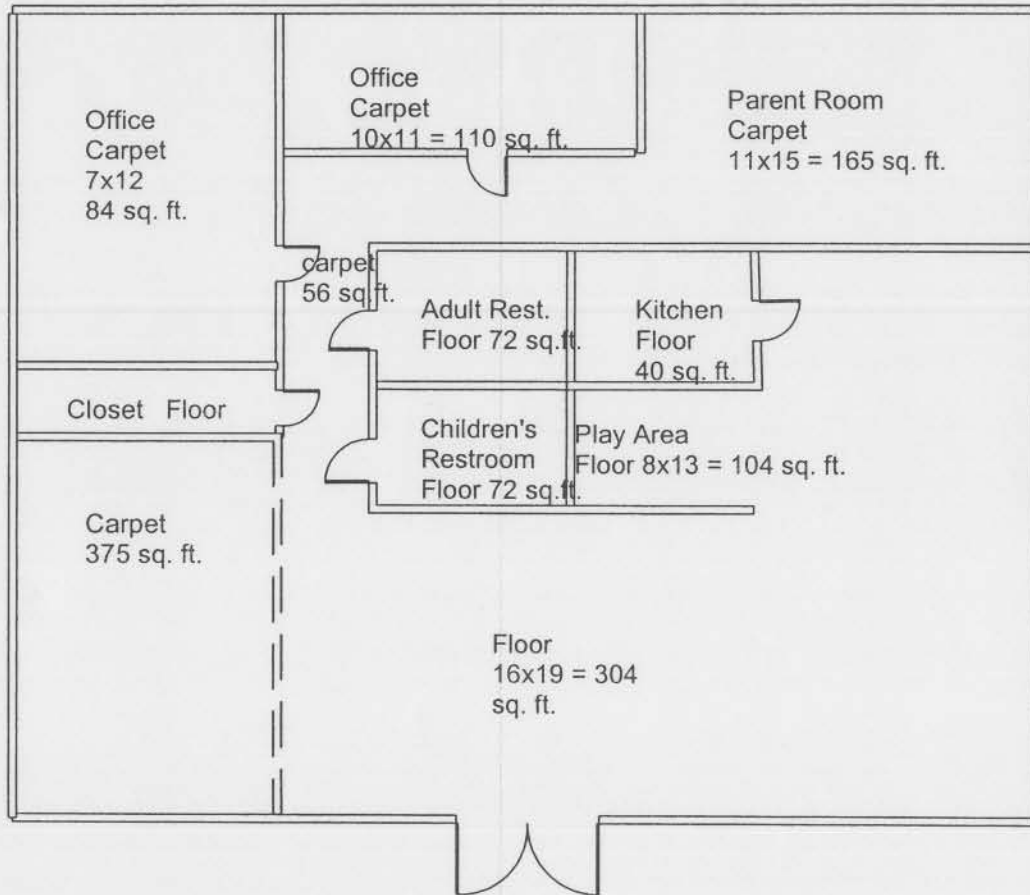
**Flooring: 125~ sq. ft.**



**Alder Grove I/T**

**2640 A & B Muir Way  
Sacramento, Ca 95818**

**Floor 1,086 sq. ft. Carpet 486 sq. ft.**



**AUBERRY PARK HEAD START**  
**8120 Power Inn Rd.**  
**Sacramento, CA**

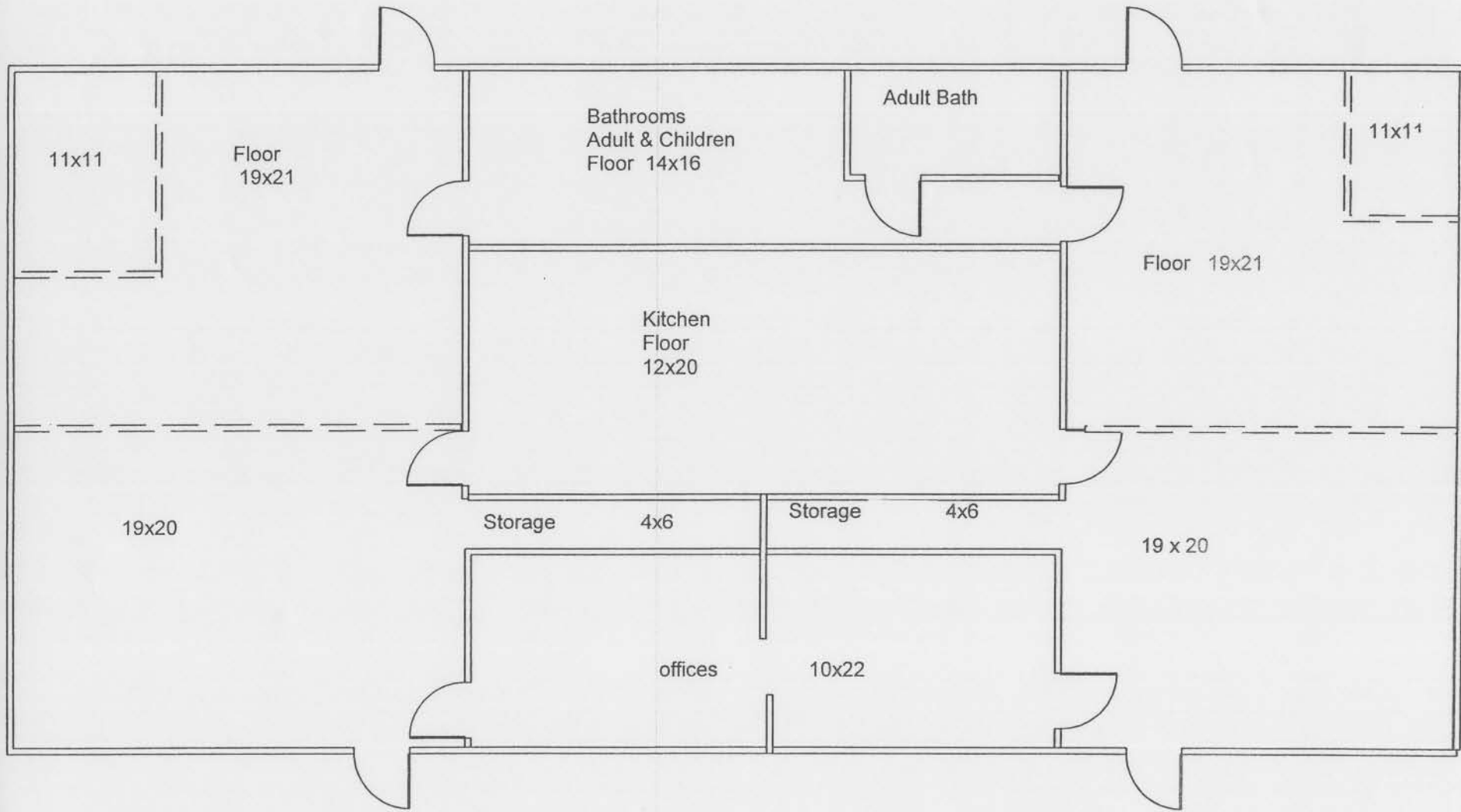
**Carpet 842 sq. ft. Floor 592 sq. ft.**



**BANNON CREEK HEAD START**  
2775 Millcreek Drive  
Sacramento, CA

**Carpet 276 sq. ft.**

**Flooring 1916 sq. ft.**

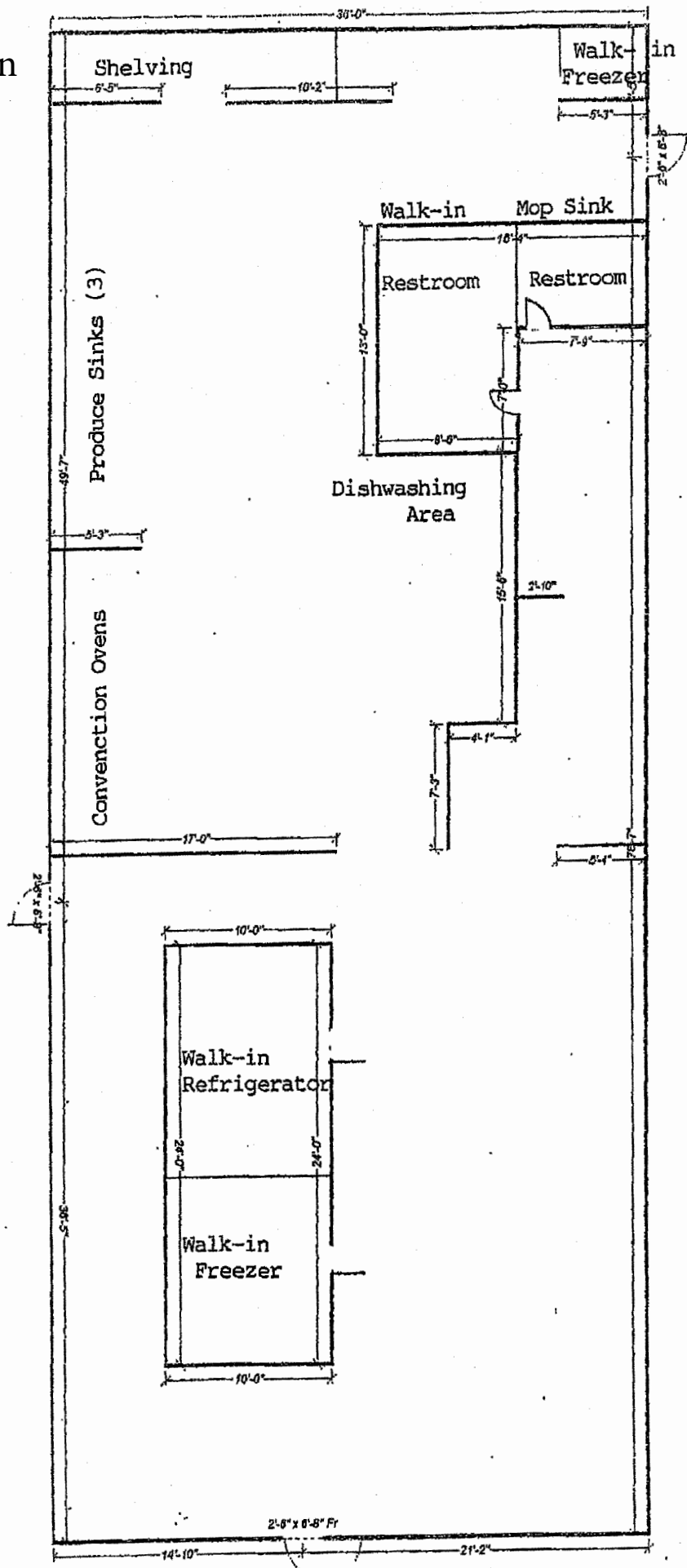


**BRIGHT BEGINNINGS HEAD START**  
10487 White Rock Road  
Rancho Cordova CA

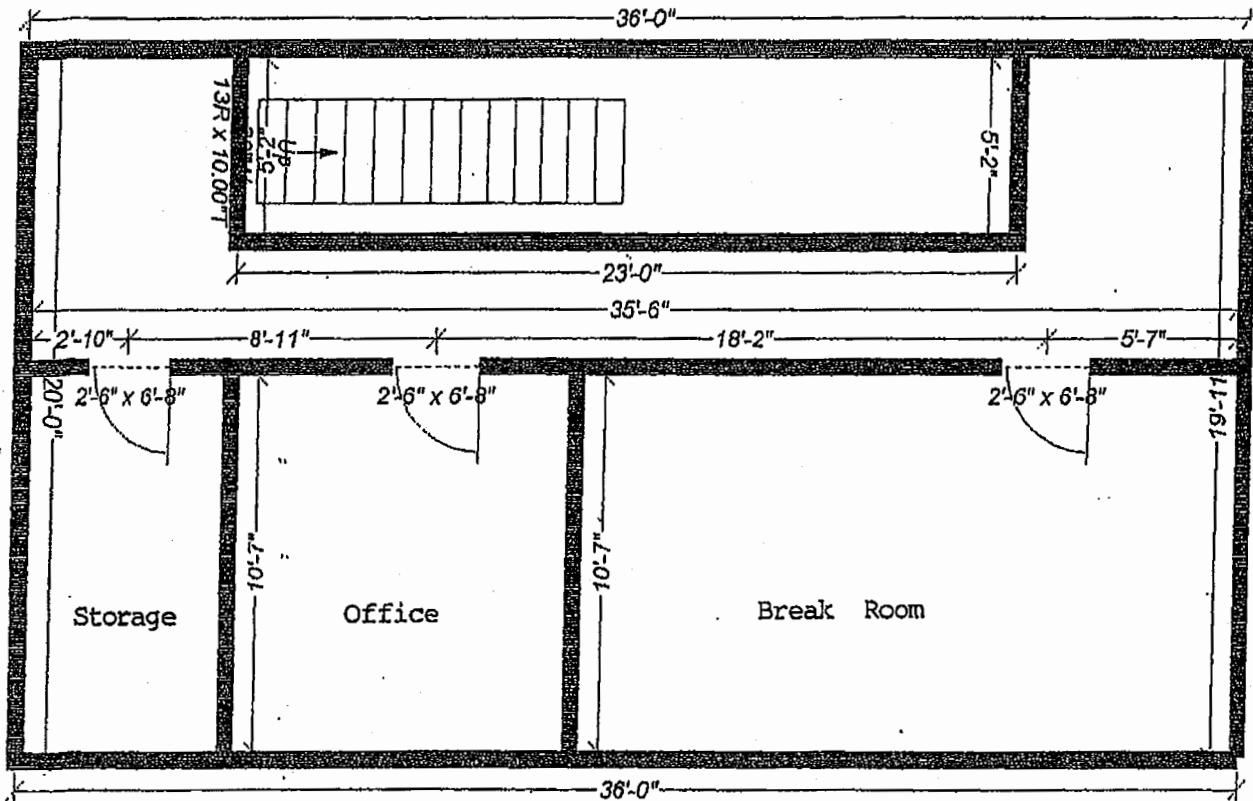
Floor 2292sq. ft.

# Central Kitchen

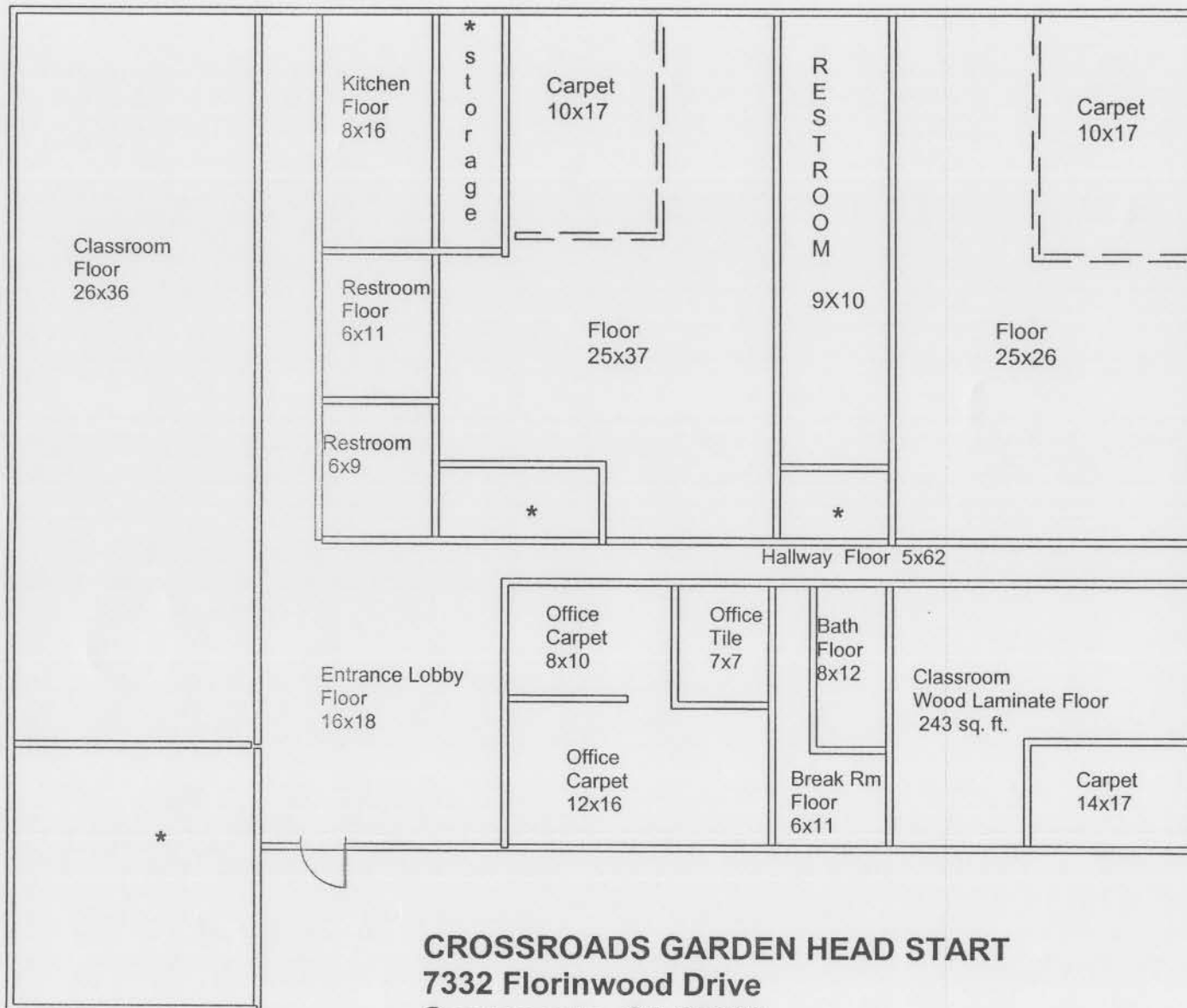
## FIRST FLOOR PLAN



Central Kitchen  
SECOND FLOOR, PLAN



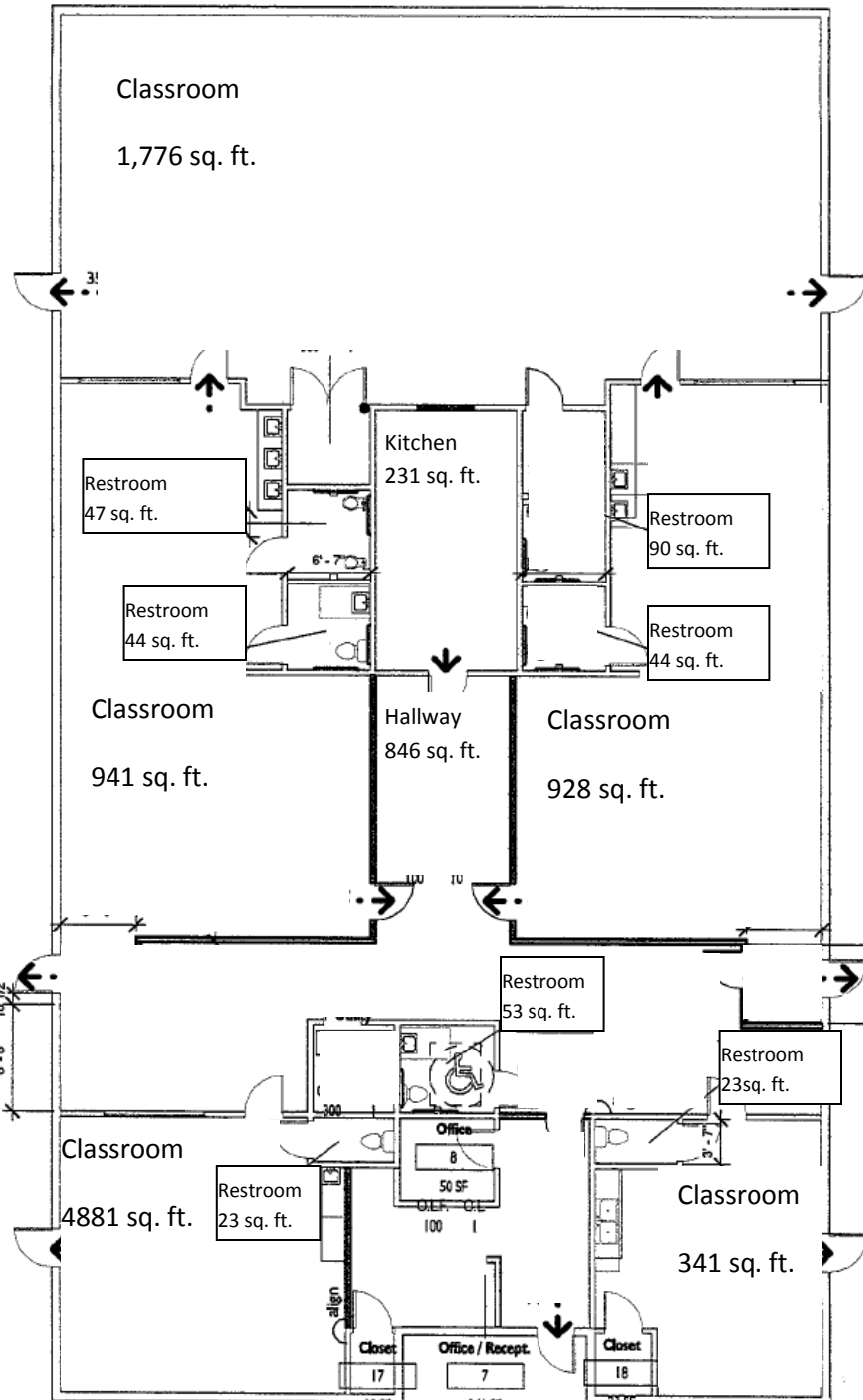




**CROSSROADS GARDEN HEAD START**  
**7332 Florinwood Drive**  
**Sacramento, CA 95823**

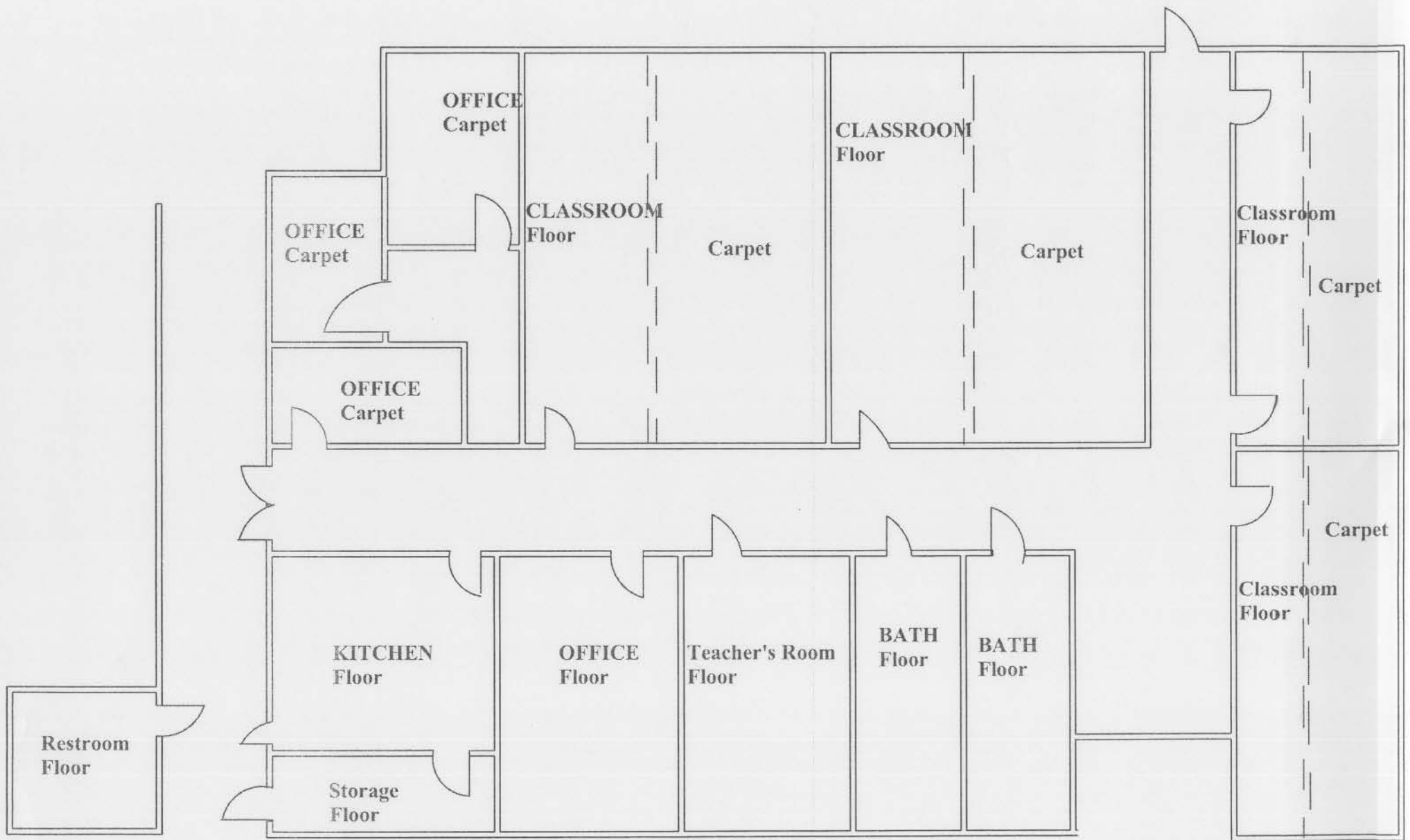
**Floor 3,760 sq. ft. Carpet 961 sq. ft.**

\* Area not to be considered



Elkhorn Early Learning Center  
 5249 Elkhorn Boulevard  
 Sacramento, CA 95842

Total: 5,540

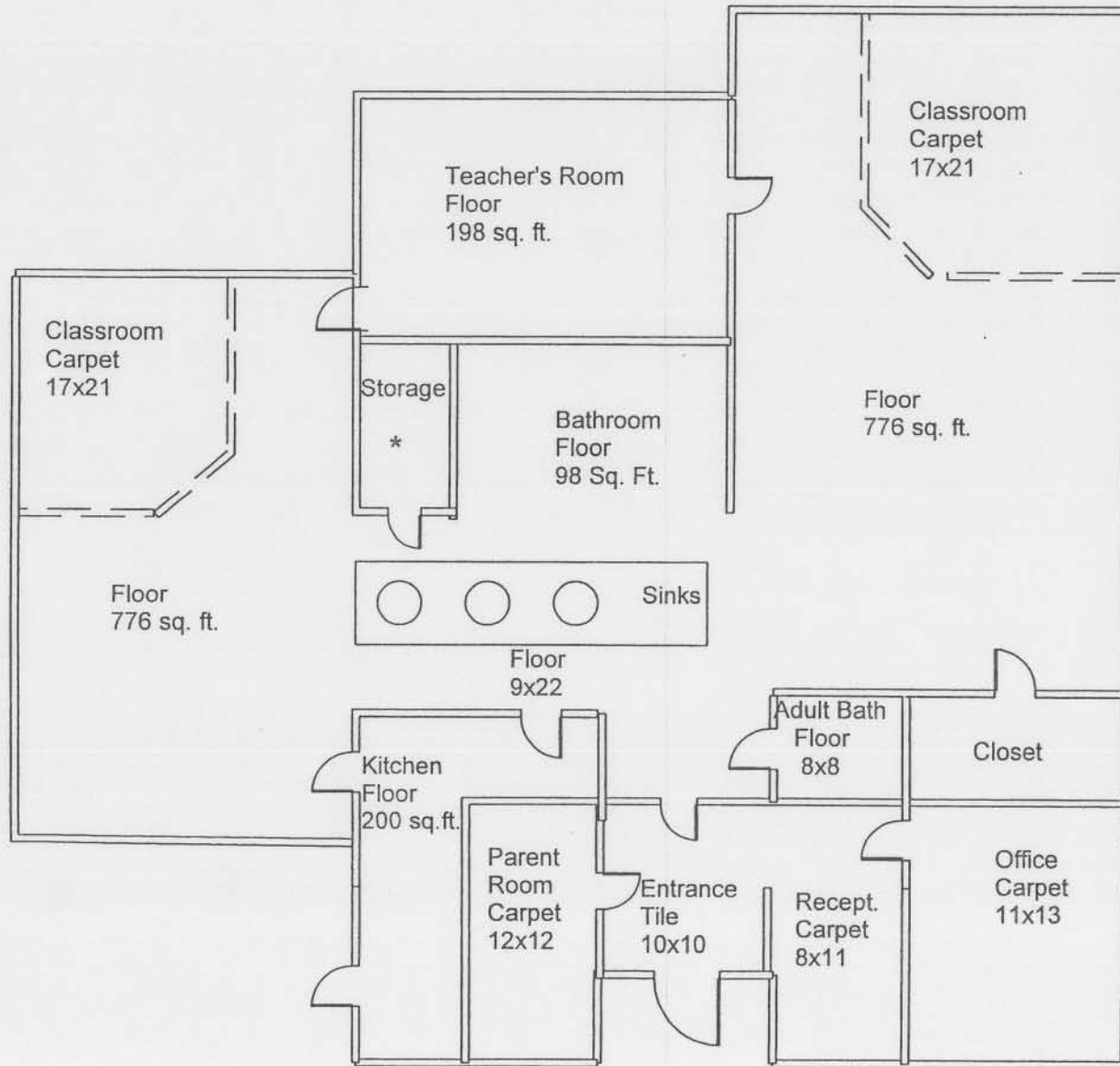


**FREEDOM PARK HEAD START**

**6015 Watt Ave., Ste. 5**

**North Highlands, CA**

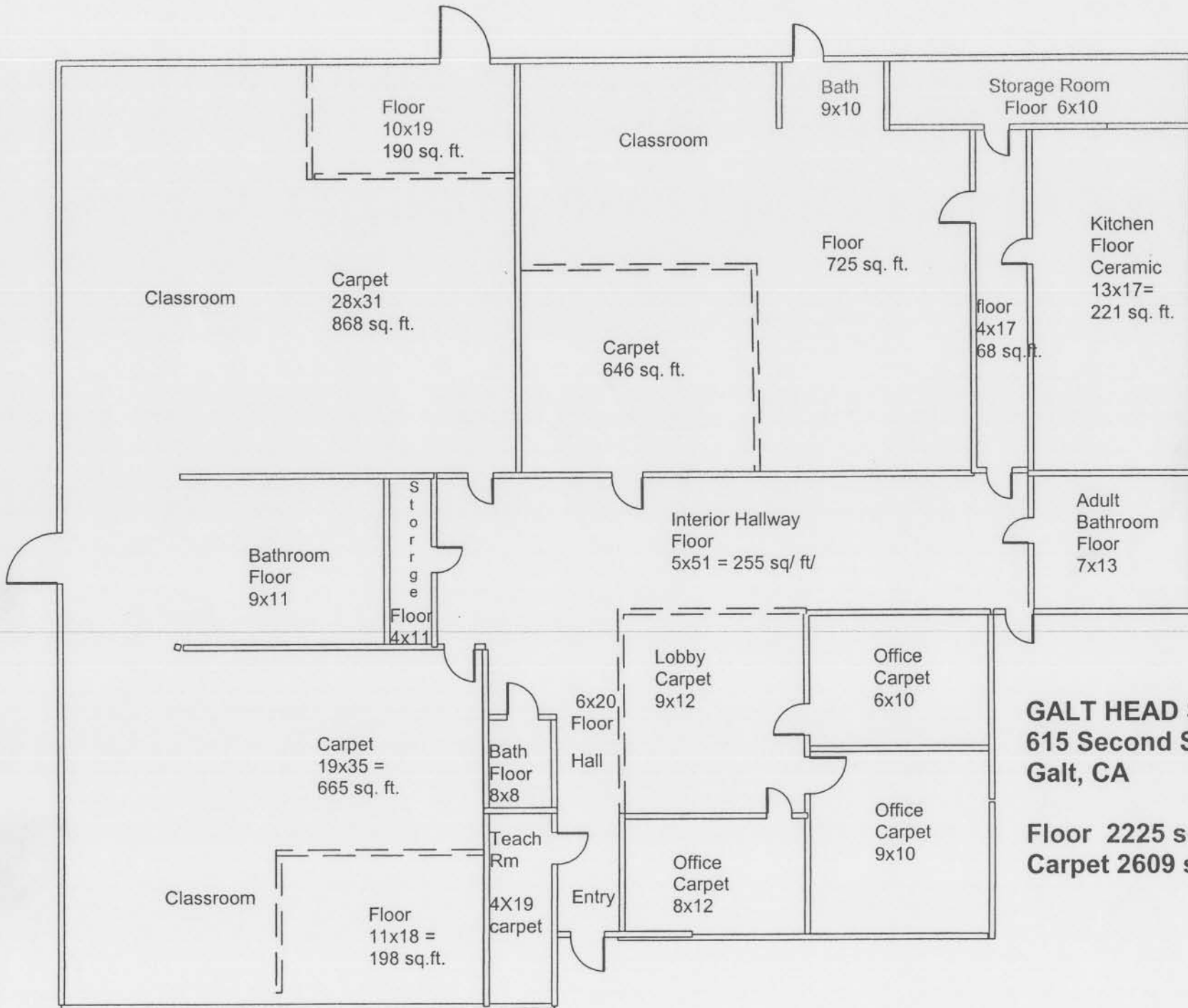
**Floor: 4,936 sq. ft. Carpet: 1,248 sq. ft.**



**FRUITRIDGE HEAD START**  
**5746 40th Street**  
**Sacramento, CA 95824**

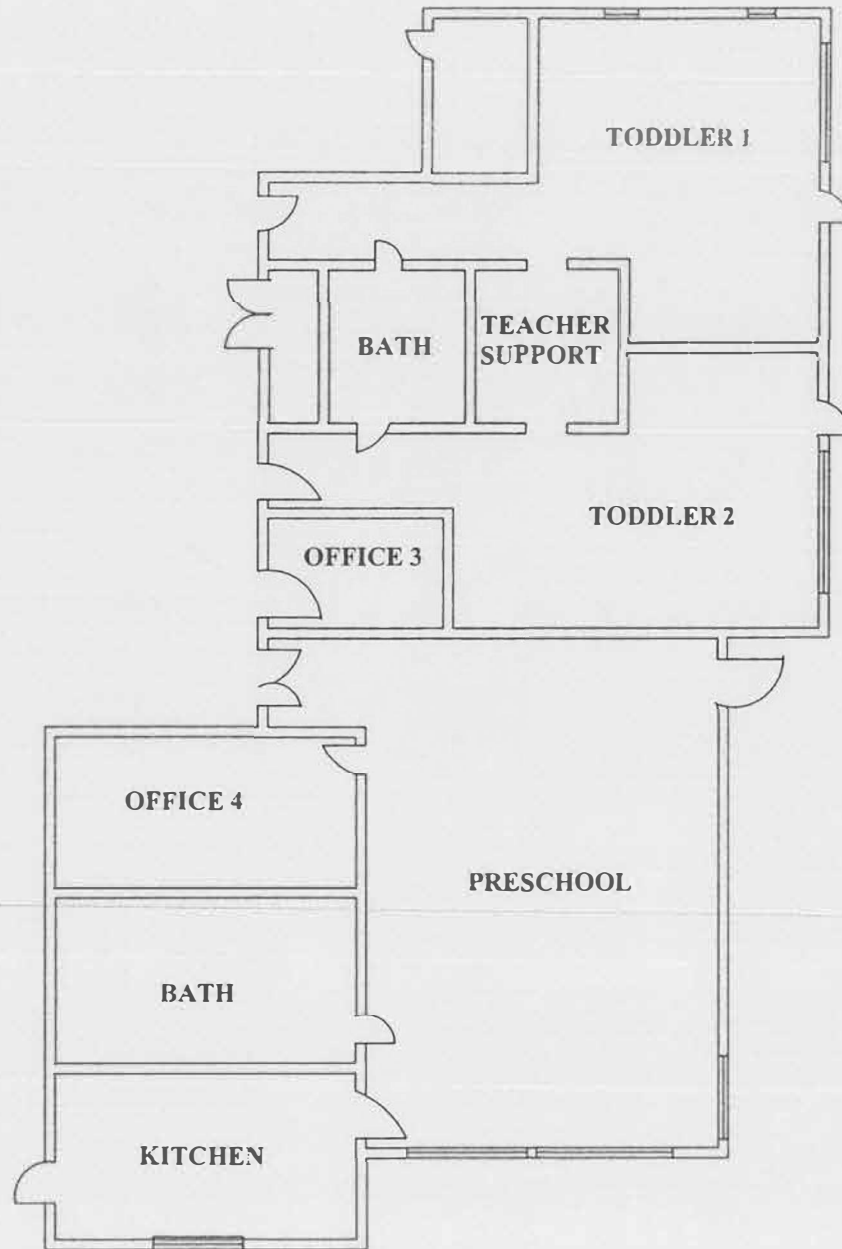
**Floor 2248 sq. ft.**  
**Carpet 1100 sq. ft.**

\* Area not to be considered



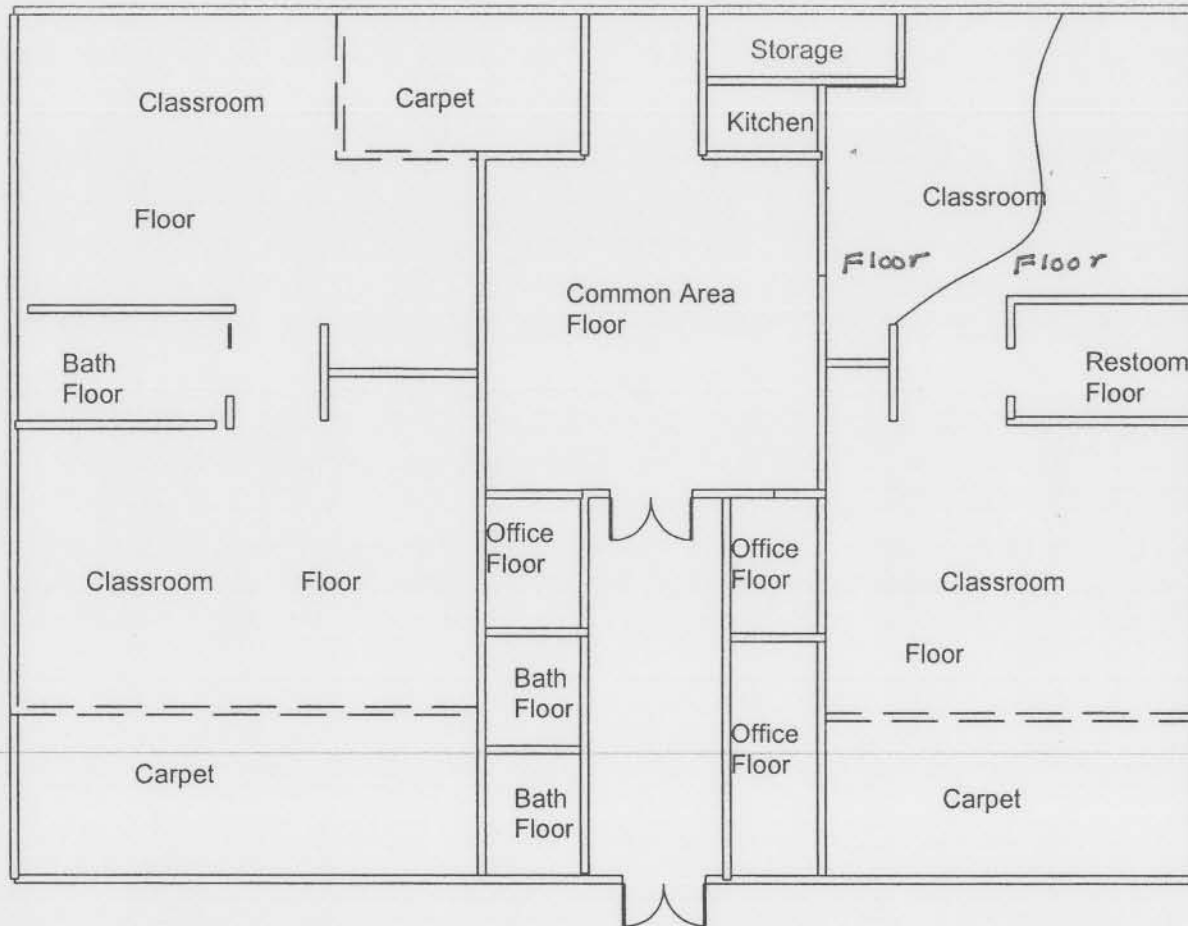
**GALT HEAD START**  
**615 Second Street**  
**Galt, CA**

**Floor 2225 sq. ft.**  
**Carpet 2609 sq. ft.**



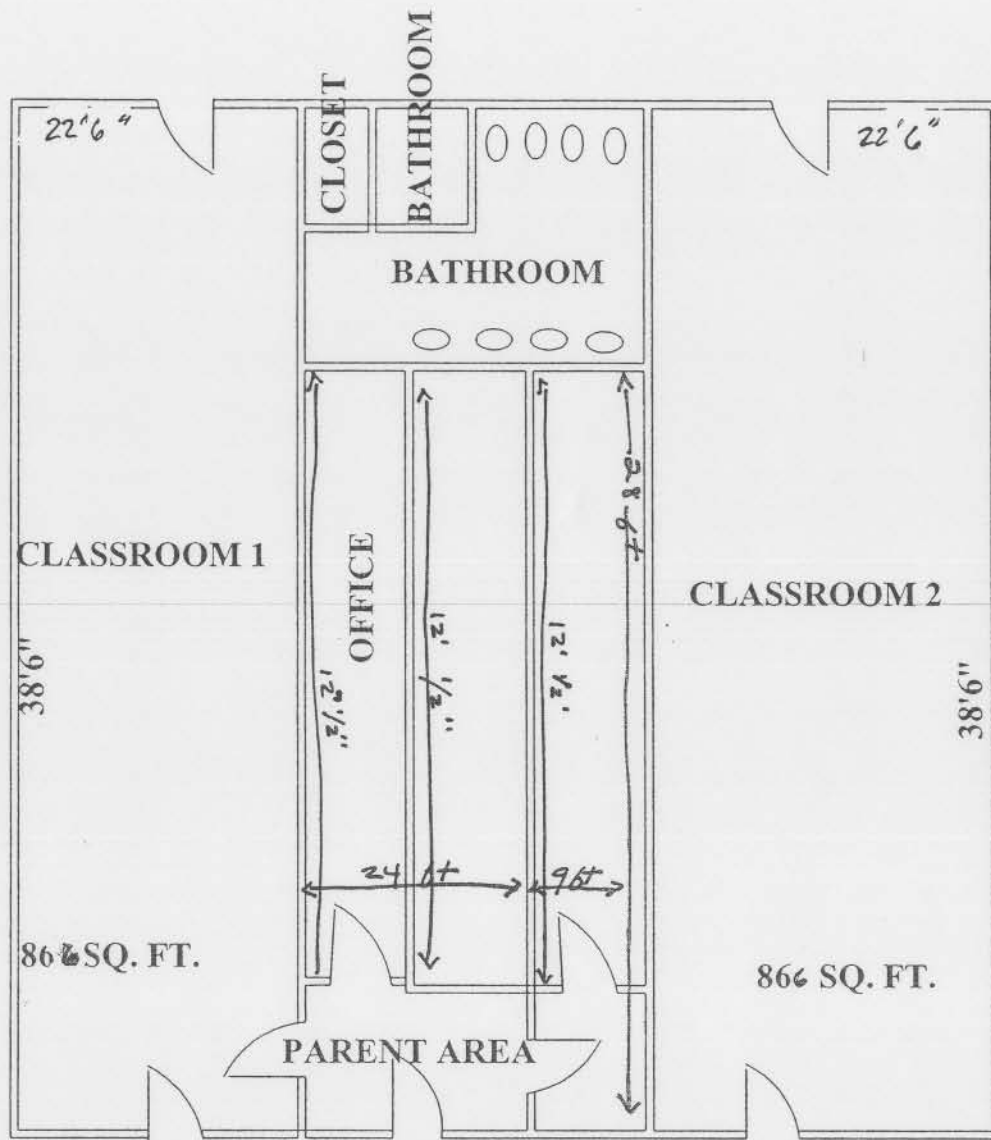
floor - 2370 sq ft  
Carpit @ 16 sq ft

**GRIZZLY HOLLOW HEAD START  
GALT, CA 95632**



**HILLSDALE HEAD START**  
 5665 Hillsdale Ave.  
 Sacramento, CA

Floor 5,696 sq. ft. Carpet 704 sq. ft.

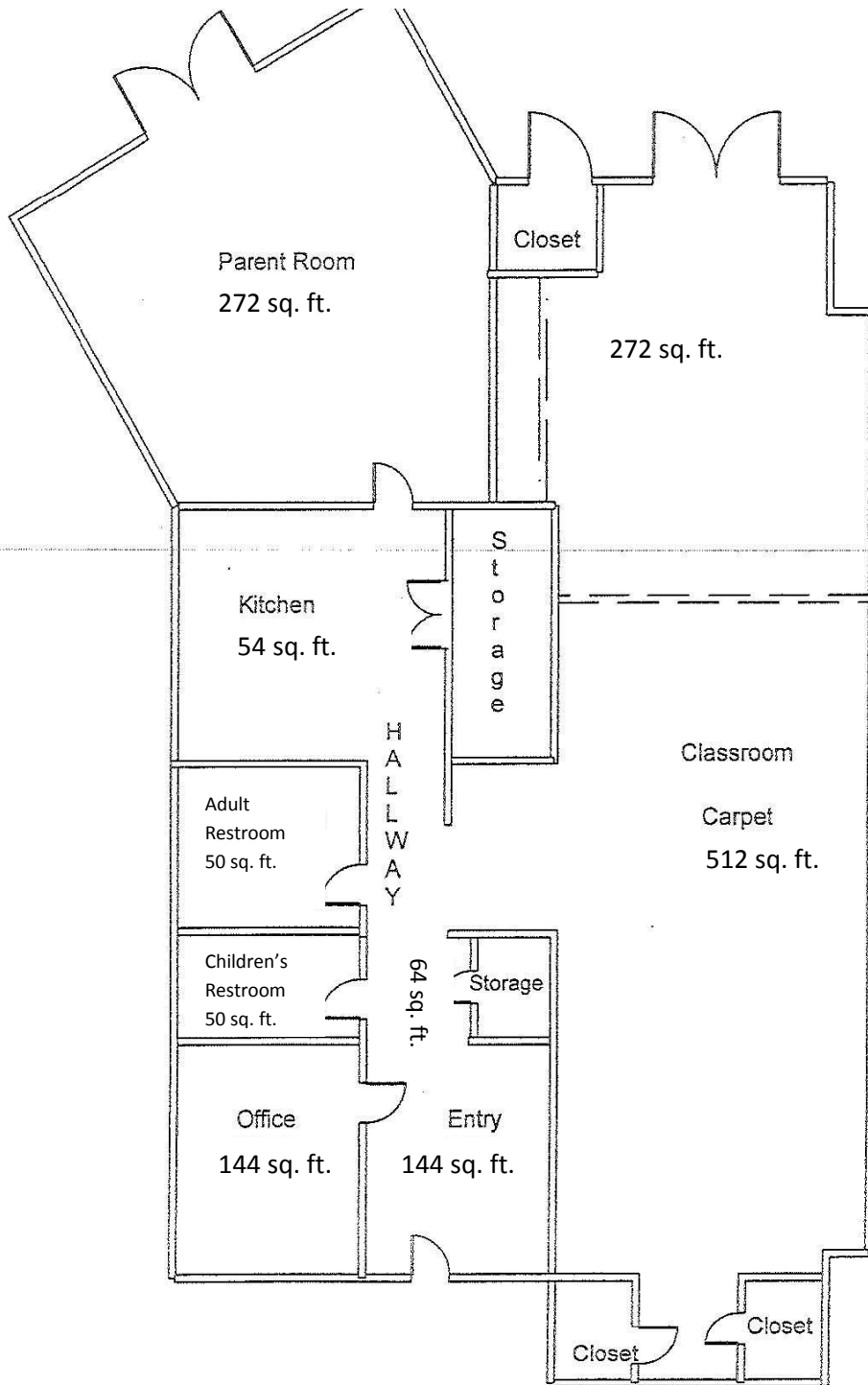


**HOPKINS PARK HEAD START**  
**2317 MATSON DRIVE**  
**SACRAMENTO, CA 95822**

**SQUARE FEET: 2656**

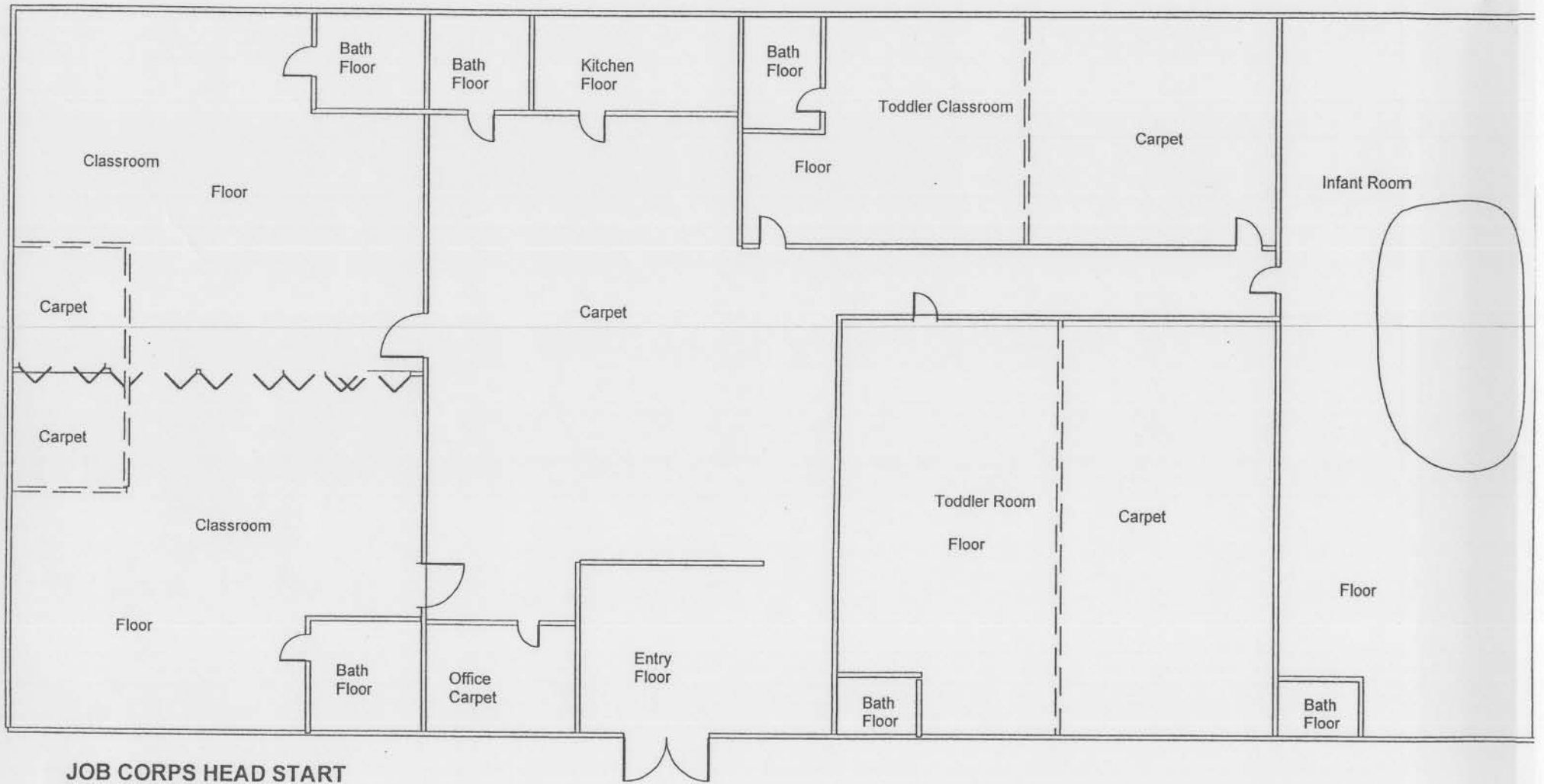
*1856.5 floor*  
*Carpet - 799.5*





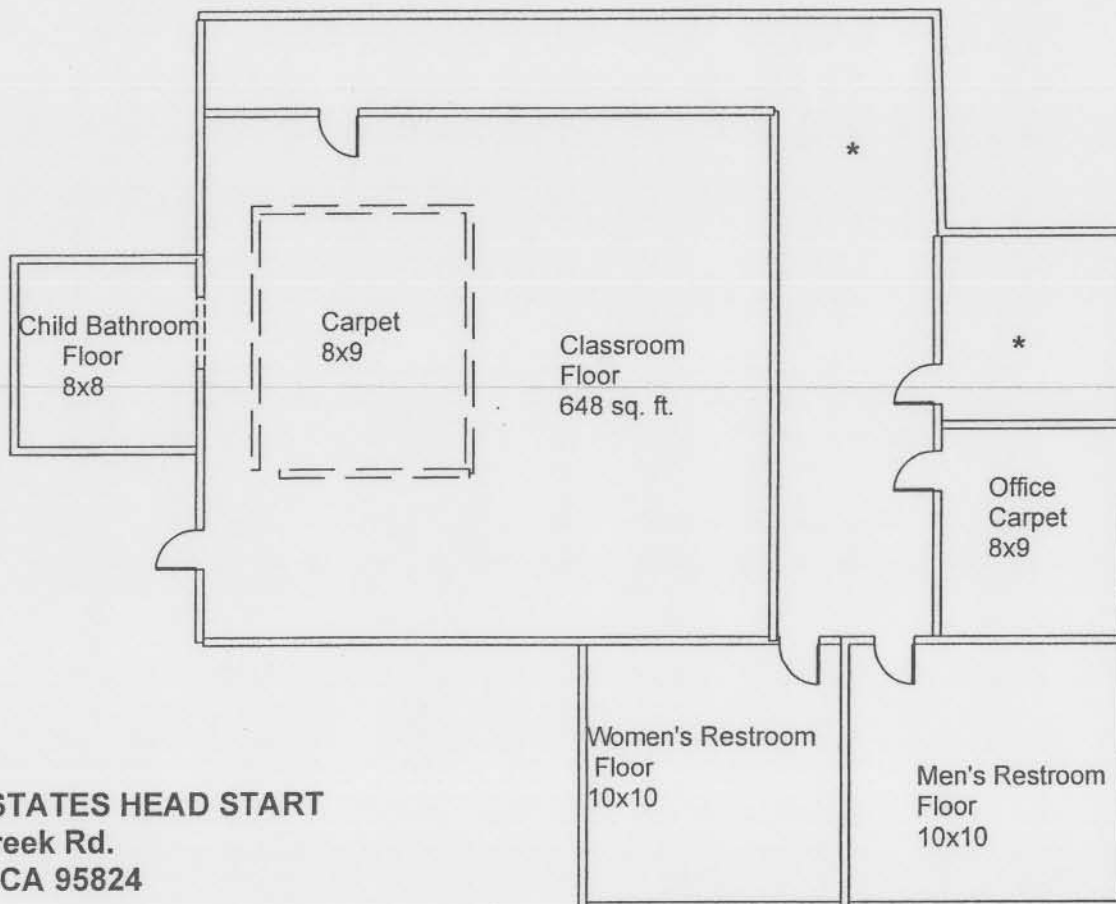
**ILLA COLLIN HEAD START**  
 3530 41<sup>st</sup> Street  
 Sacramento, CA 95824

Floor: 1,000 sq. ft. Carpet: 512 sq. ft.



**JOB CORPS HEAD START**  
**3100 Meadowview Rd.**  
**Sacramento, CA**

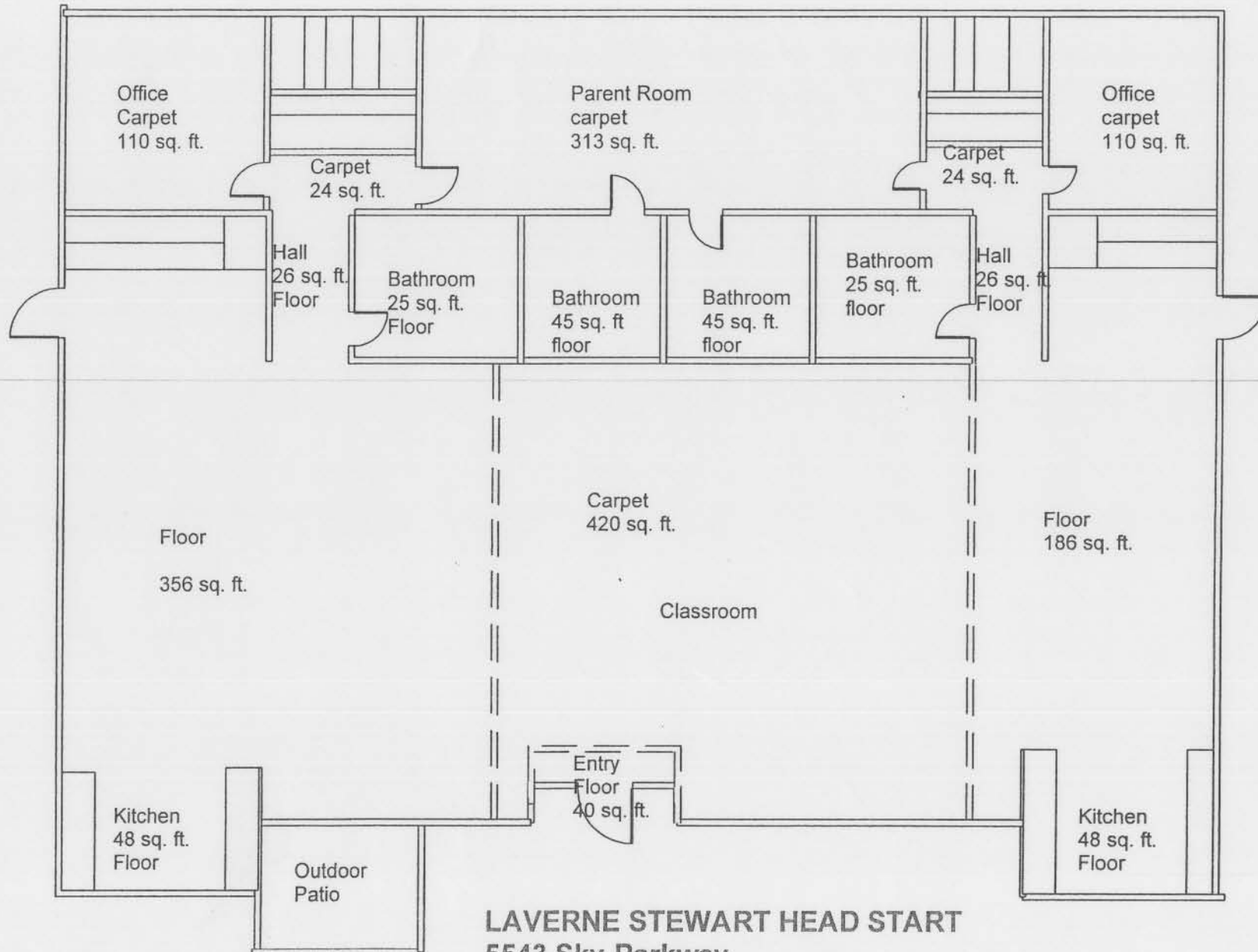
**Floor 1,371 sq. ft. Carpet 1,300 sq. ft.**



**KENNEDY ESTATES HEAD START**  
6301 Elder Creek Rd.  
Sacramento, CA 95824

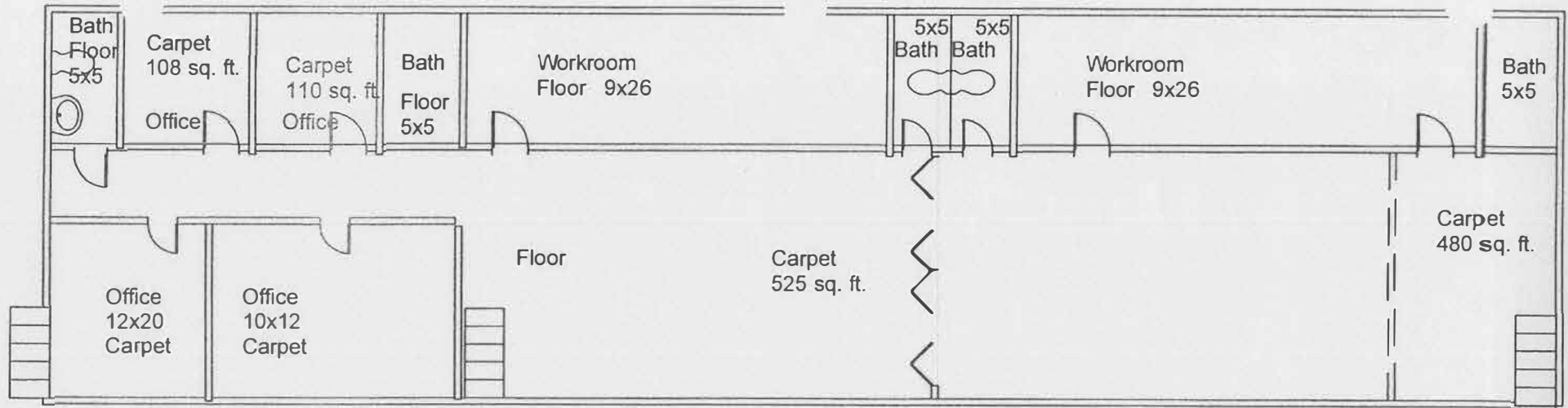
**Floor 912 sq. ft. Carpet 144sq. ft.**

\* Area not to be considered

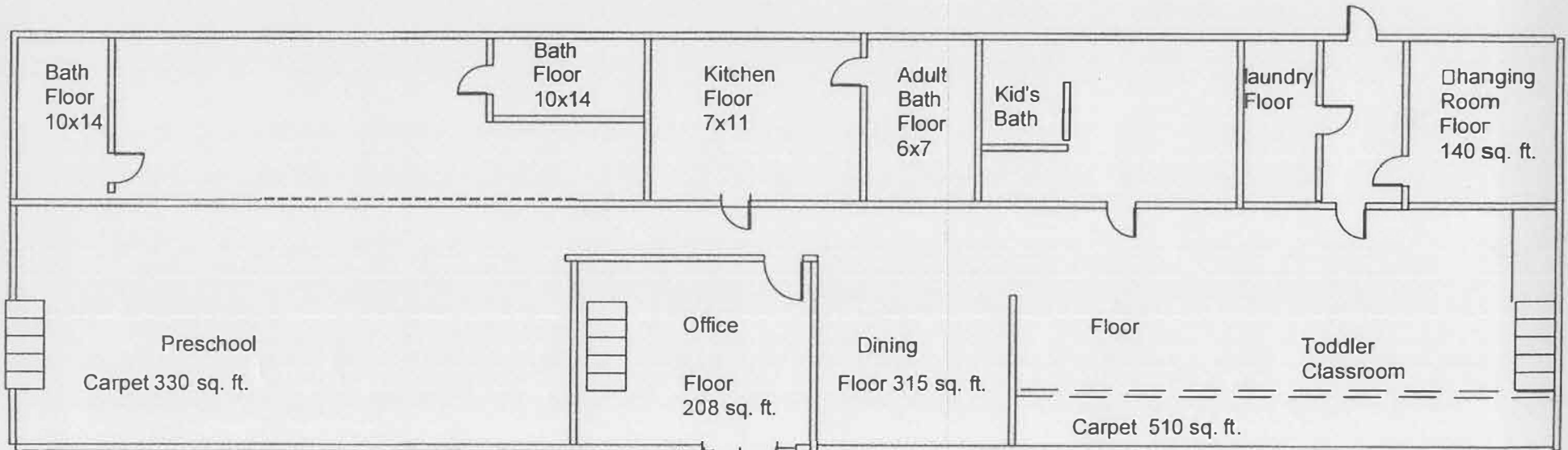


**LAVERNE STEWART HEAD START**  
**5543 Sky Parkway**  
**Sacramento, CA 95823**

**Floor 870 sq. ft. Carpet 1001 sq. ft.**



Second Floor Total Carpet 1,580 sq. ft. Total Floor 500 sq. ft.



First Floor Carpet 860 sq. ft. Floor 1,100 sq. ft.

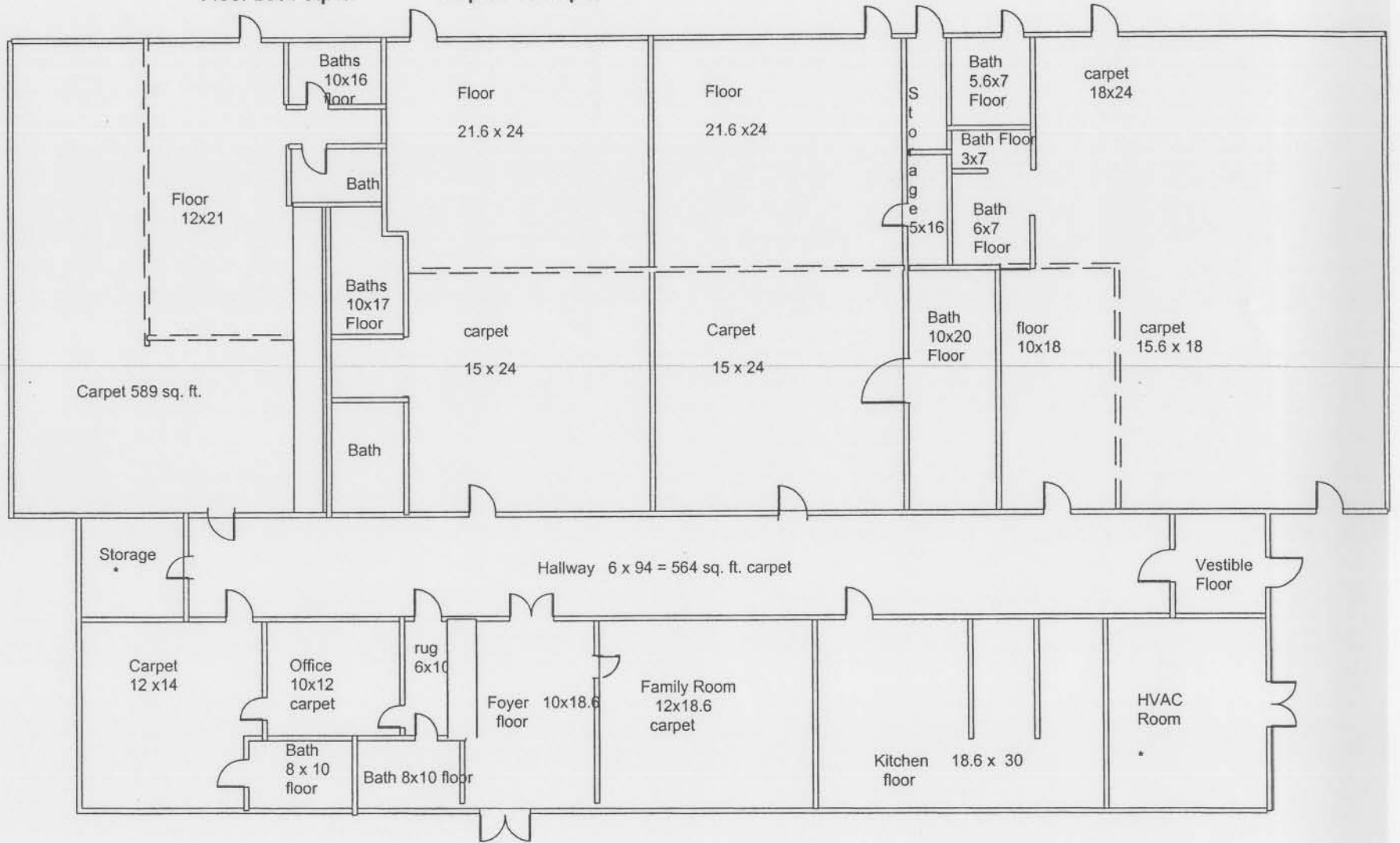
**Marina Vista**  
**263 Seavey Circle**  
**Sacramento, CA 95818**

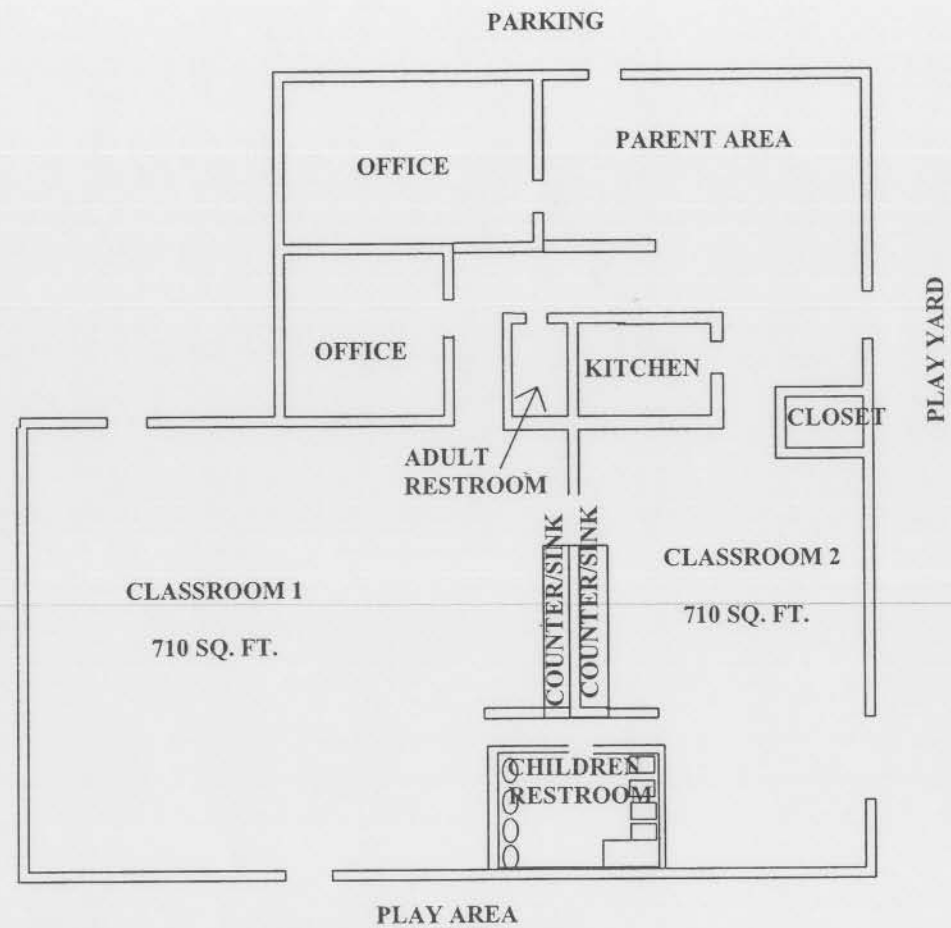
Carpet 440 sq. ft. Floor 1,600 sq. ft.

MATHER HEAD START  
10546 Peter A. McCuen Rd  
Mather, CA

Floor 2884 sq. ft.

Carpet 3156 sq. ft.



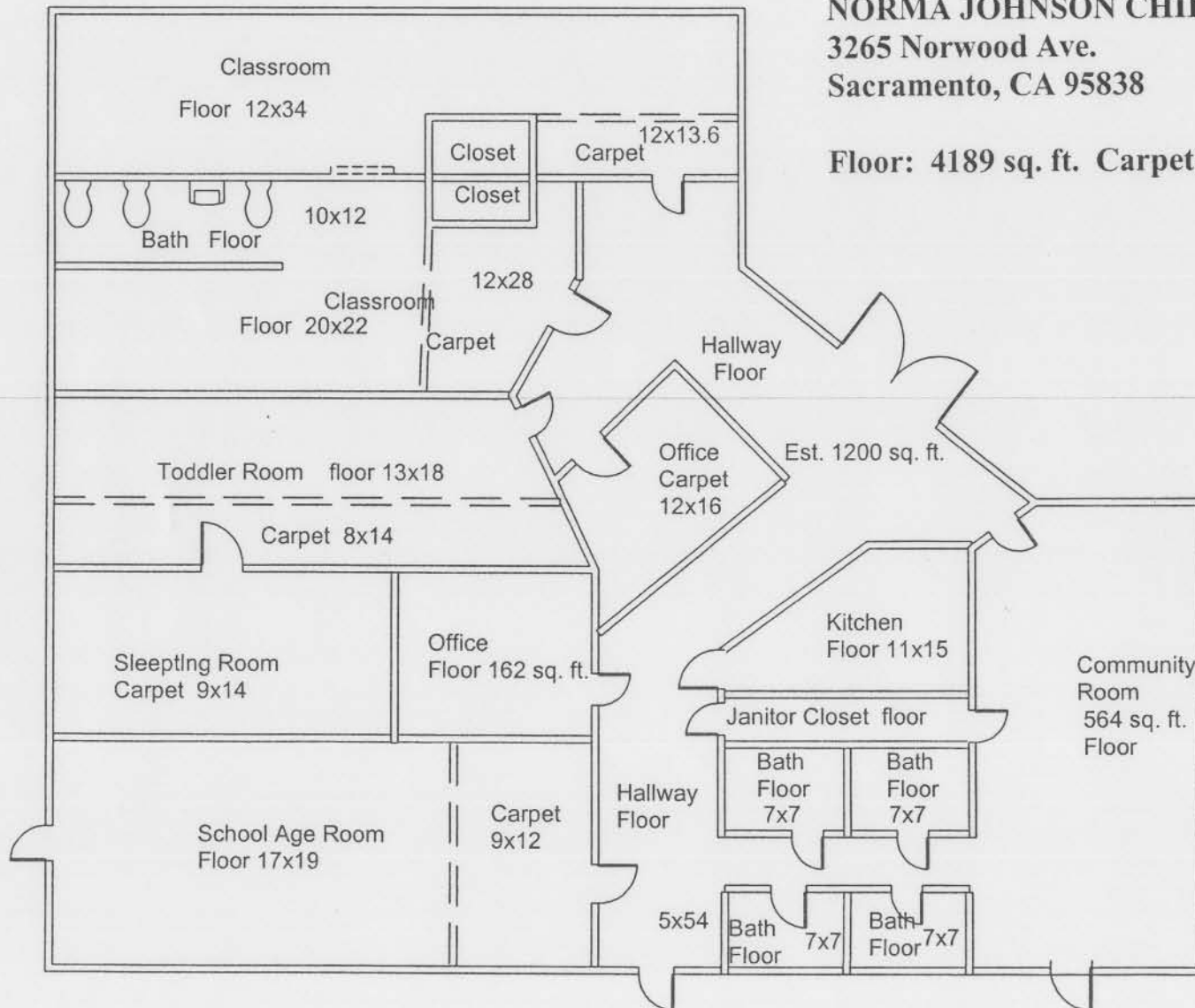


**NEDRA COURT**  
**60 NEDRA COURT**  
**SACRAMENTO, CA 95824**

**SQ. FT. 3200**

**NORMA JOHNSON CHILD DEV. CENTER**  
**3265 Norwood Ave.**  
**Sacramento, CA 95838**

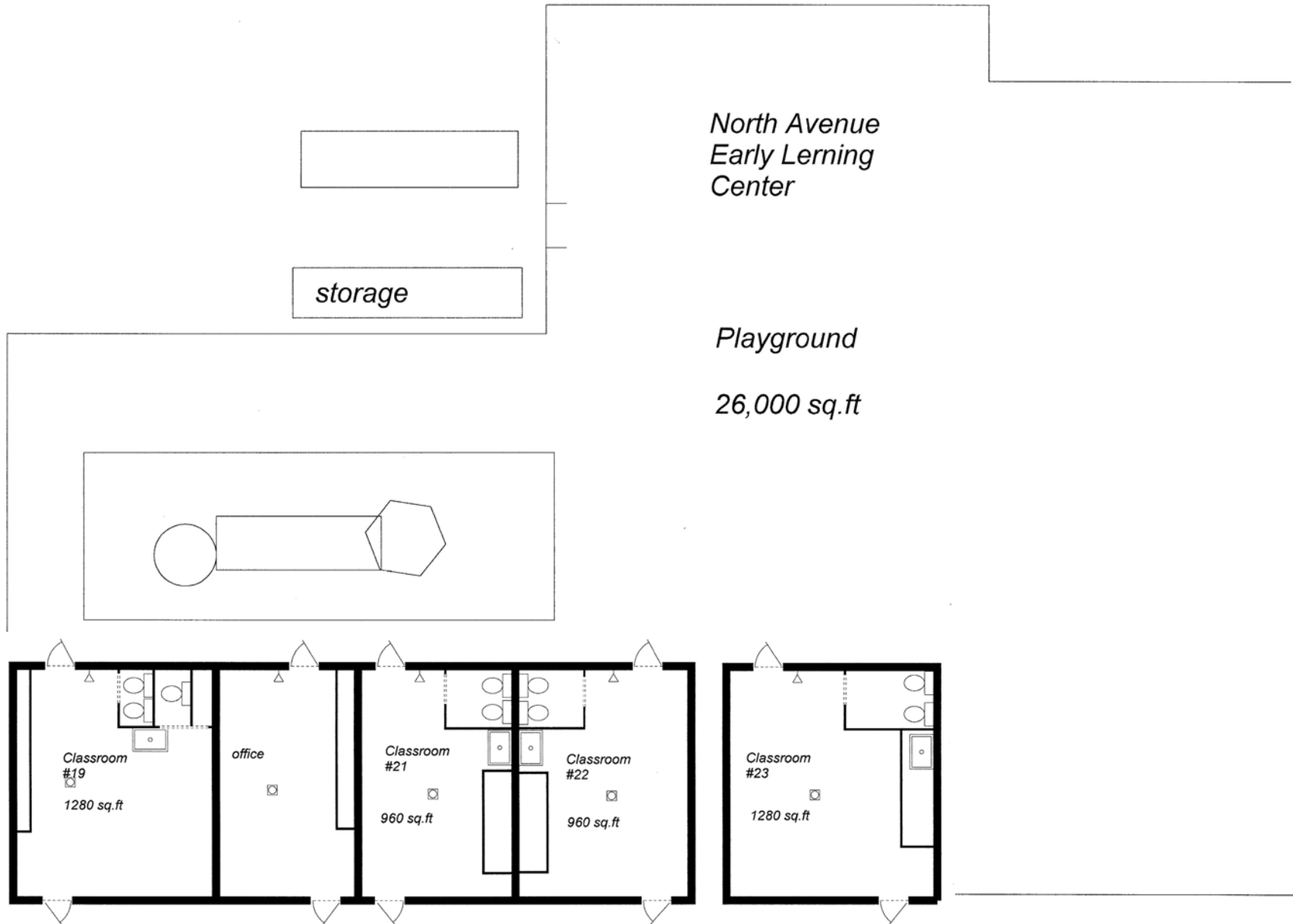
**Floor: 4189 sq. ft. Carpet: 1,037 sq. ft.**

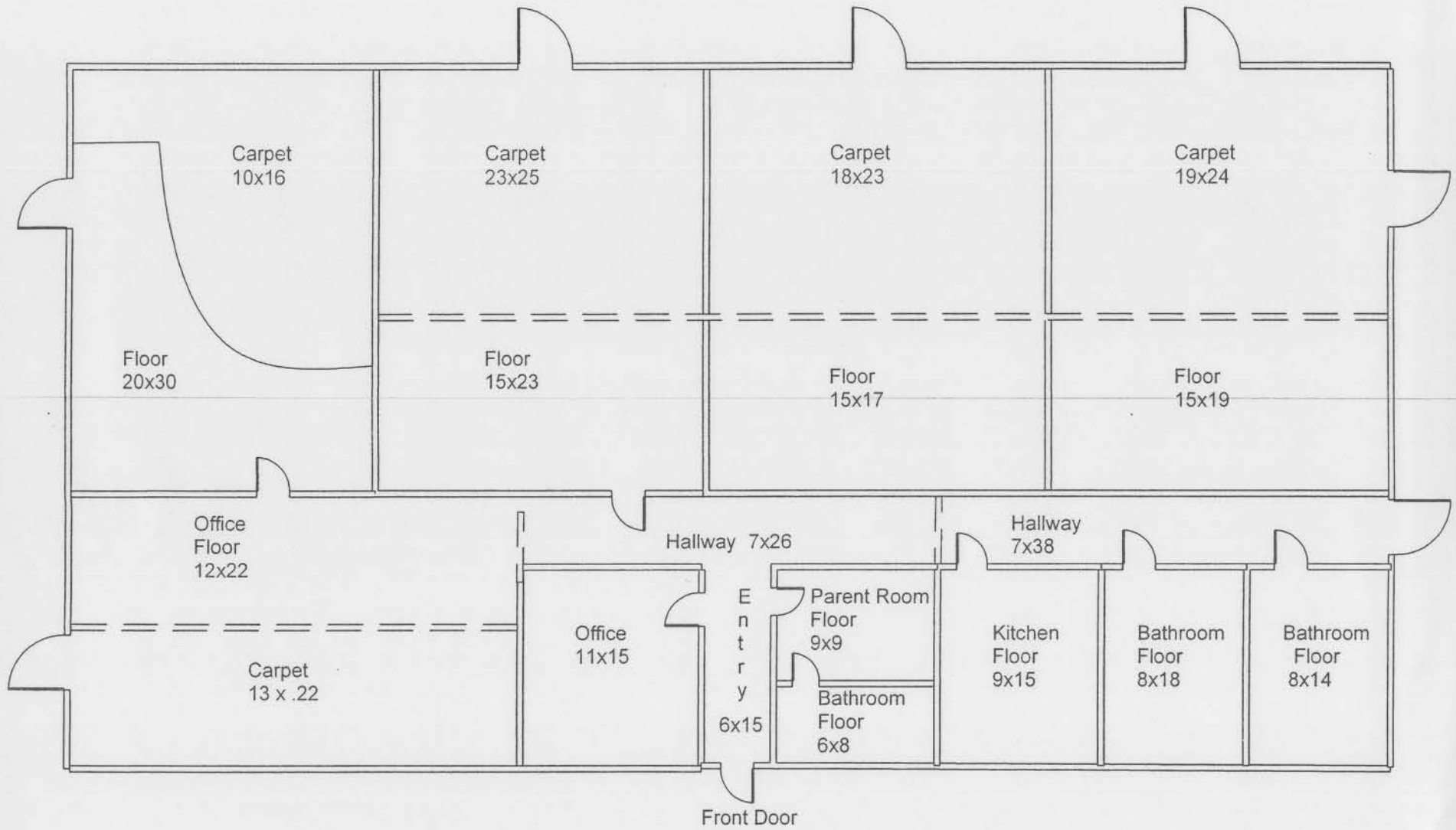




North Avenue Early Learning Center  
1281 North Avenue  
Sacramento, CA 95838  
4,480 sq. ft.

△ Pull Station  
□ Smoke Detector

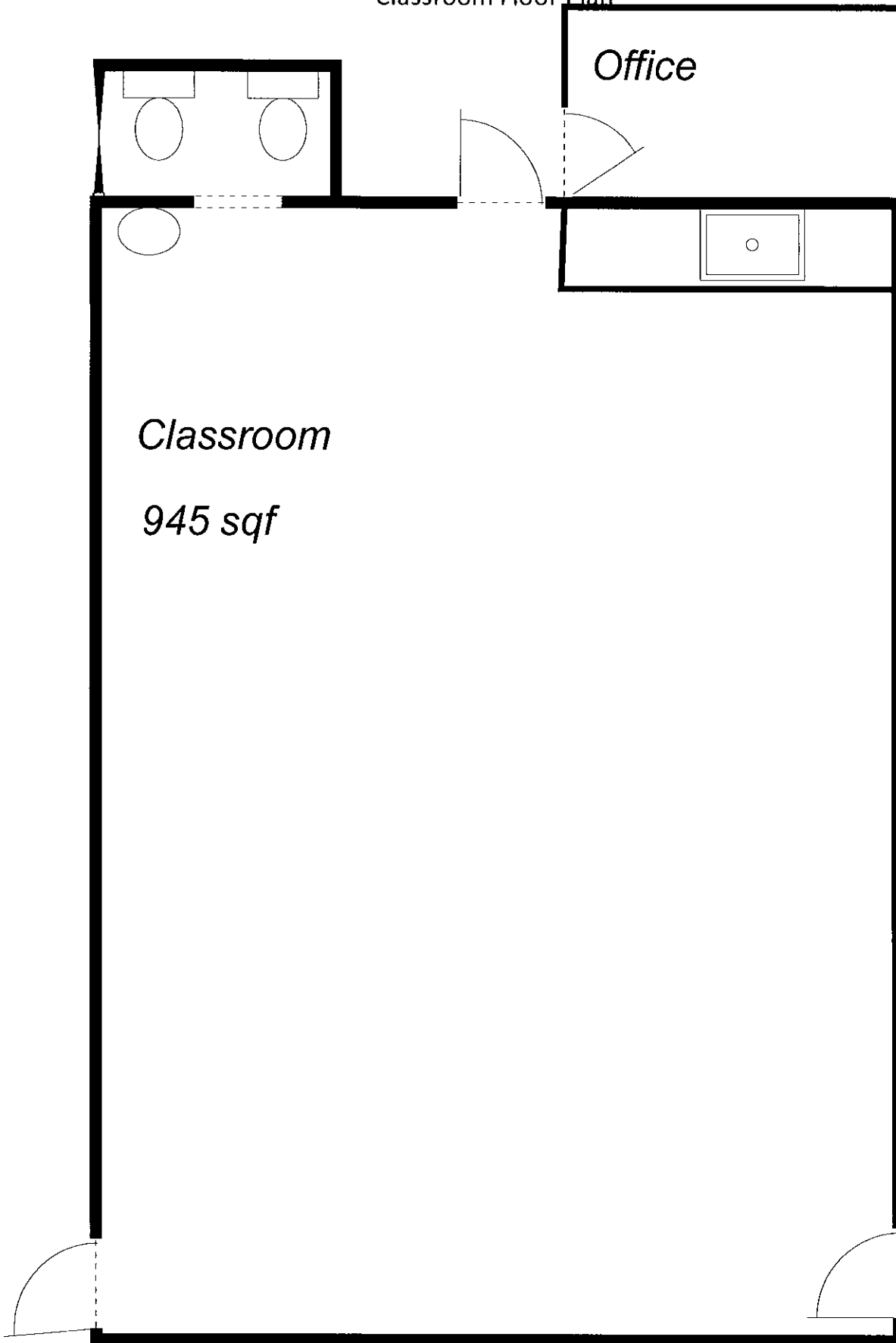




**NORTHVIEW HEAD START**  
**2401 Northview**  
**Sacramento, CA**

**Floor 3,099sq. ft. Carpet 1891sq. ft.**

Parker Avenue Early Learning Center  
Classroom Floor Plan

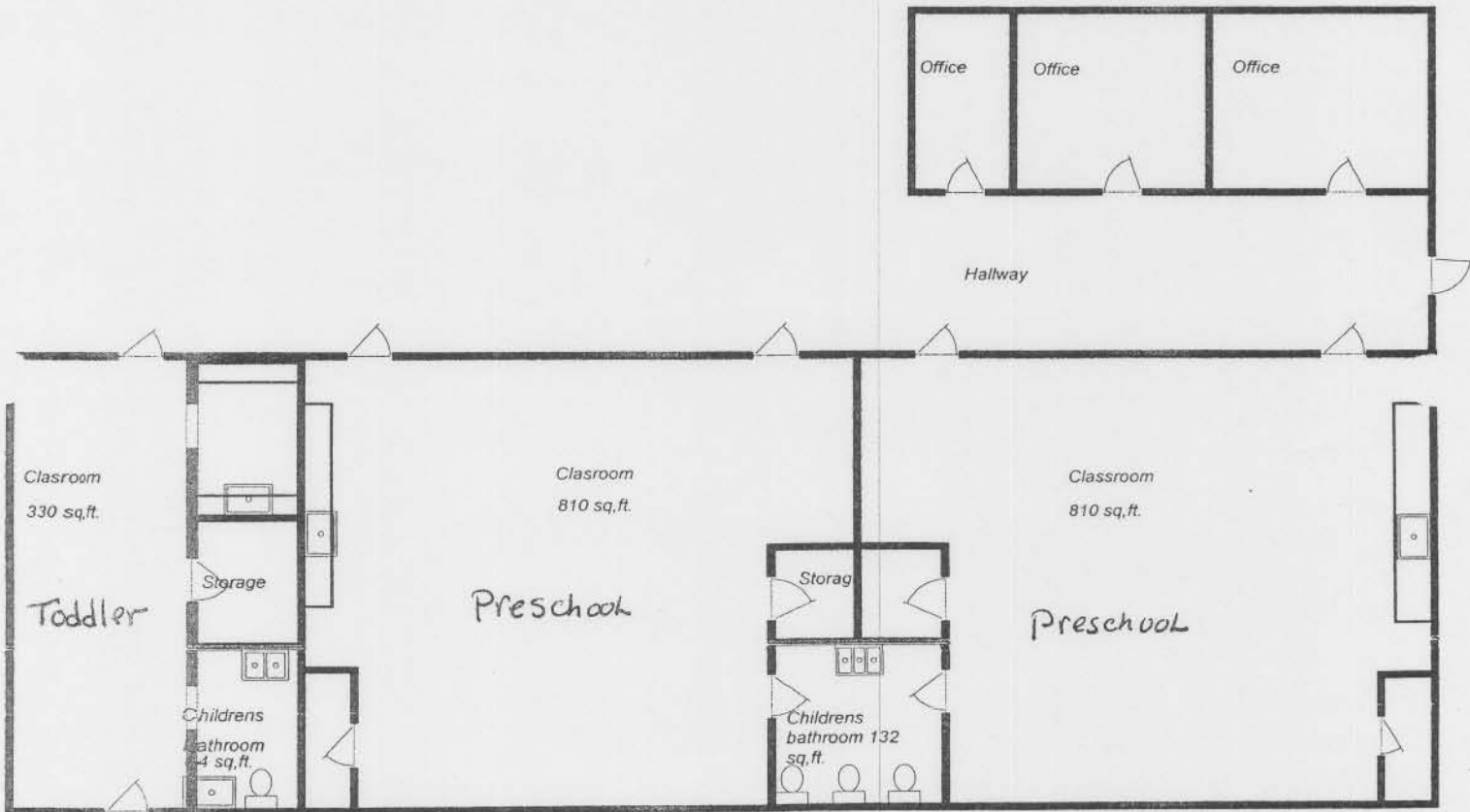


*Office*

*Classroom*

*945 sqf*

PHOENIX  
PARK



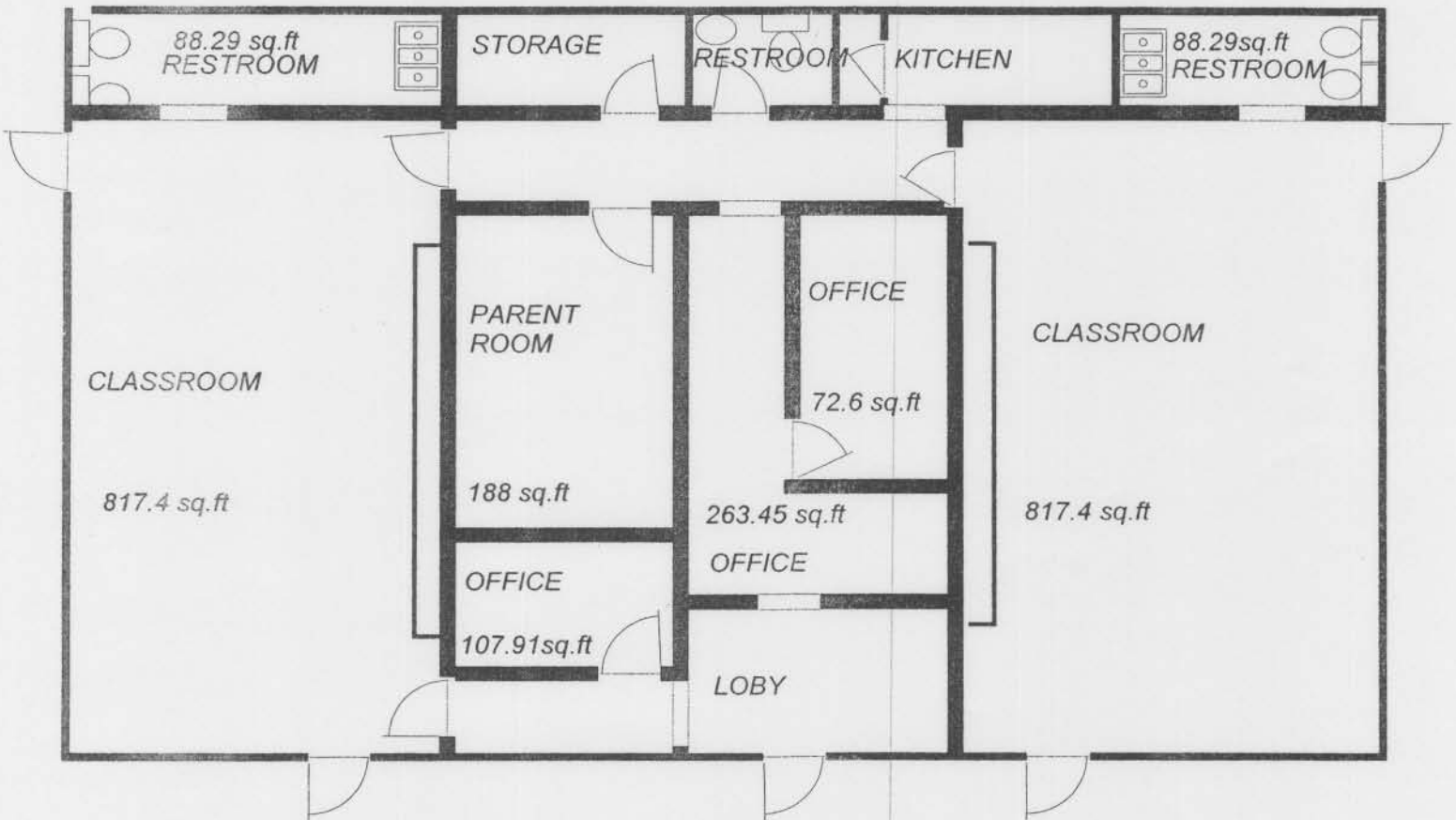
Phoenix Park Head start  
4400 Shining star  
Sacramento, Ca 95823

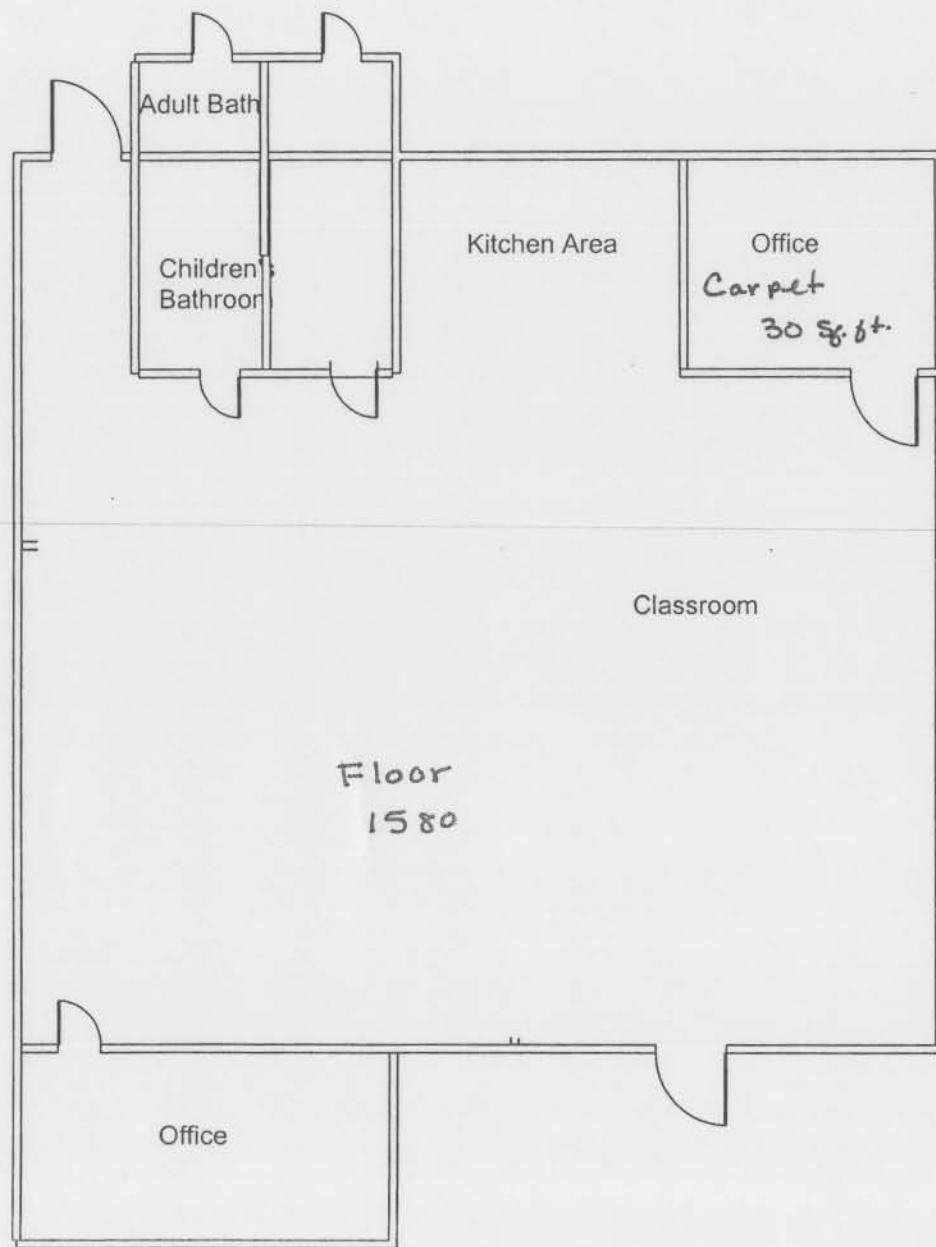
Floor

~~148~~  
 19496 floor  
 2146 floor  
 216 carpet  
 -----  
 2298

2443.34  
 - 575.00  
 -----  
 1868.34

SOLID FOUNDATION



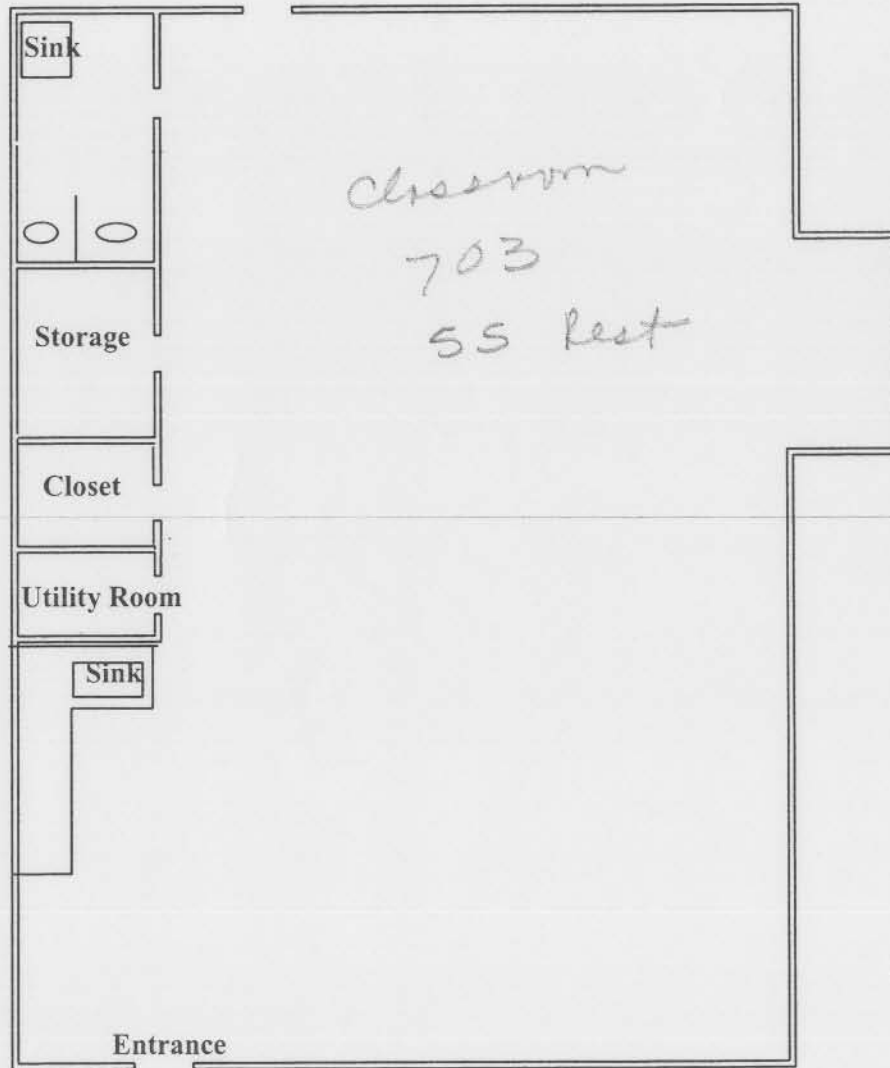


**STRIZEK PARK HEAD START**  
**3829 Stephen Drive**  
**North Highlands, CA**

Floor 1580 sq. ft.

Carpet 30 sq. ft.

Playground



floor  
Carpet 405

**VINELAND HEAD START**  
**6450 20TH STREET, ROOM 14**  
**RIO LINDA, CA 95673**

Carpet 602  
floor 758

Total  
**SQUARE FEET: 1360**